



PSE15L-C2

Walkie electric stacker

Long-tiller Design

Capacity 1500Kg

Easy Maintenance

CURTIS Technology

Powerful Battery

Robust Design

High Maneuverability

Best Cost-Performance Ratio

NEW / *Noblelift Products*
ARRIVAL

NOBLELIFT INTELLIGENT EQUIPMENT CO., LTD

www.noblelift.com

Type sheet for industrial truck acc. to VDI 2198

PSE15L-C2

Identification

1.2	Manufacturer's type designation		PSL(PSE15L-C2)	
			1600	3600
1.3	Drive: electric (battery type, mains...), diesel, petrol, fuel gas		Electric	
1.4	Operator type (hand, pedestrian, standing, order picker)		Pedestrian	
1.5	Rated capacity/ rated load	Q (t)	1.5	
1.6	Load centre distance	c (mm)	600	
1.8	Load distance ,centre of drive axle to fork	x (mm)	794	
1.9	Wheelbase	y (mm)	1296	

Weights

2.1	Service weight	kg	440	560
2.2	Axle loading, laden front/rear	kg	565 / 1285	615 / 1445
2.3	Axle loading, unladen front/ rear	kg	245/105	390/170

Wheels, Chassis

3.1	Tires: solid rubber, superelastic, pneumatic, polyurethane		Polyurethane (PU)	
3.2	Tyre size, front	Øxw (mm)	Ø210×70	
3.3	Tyre size, rear	Øxw (mm)	Ø80×70	
3.4	Additional wheels(dimensions)	Øxw (mm)	Ø100×50	
3.5	Wheels, number front/ rear(x=driven wheels)		1x+1/ 2	
3.6	Tread, front	b10 (mm)	547.5	
3.7	Tread, rear	b11 (mm)	410 / 525	

Basic Dimensions

4.2	Height, mast lowered	h1 (mm)	1930	2282
4.3	Free Lift	h2 (mm)	1508	78
4.4	lift	h3 (mm)	1600	3513
4.5	Height, mast extended	h4 (mm)	1930	4039
4.9	Height drawbar in driving position min./max.	h14 (mm)	670 / 1228	
4.15	Height, lowered	h13 (mm)	91	
4.19	Overall length	l1 (mm)	1805	
4.2	Length to face of forks	l2 (mm)	684	
4.21	Overall width	b1 (mm)	800	
4.22	Fork dimensions DIN ISO 2331	s/e/l (mm)	60 / 180 / 1150	
4.25	Fork spread	b5 (mm)	570 / 685	
4.32	Ground clearance, centre of wheelbase	m2 (mm)	25	
4.33	Aisle width for pallets 1000x1200 crossways	Ast (mm)	2324	
4.34	Aisle width for pallets 800x1200 lengthways	Ast (mm)	2269	
4.35	Turning radius	Wa (mm)	1481	

Performance data

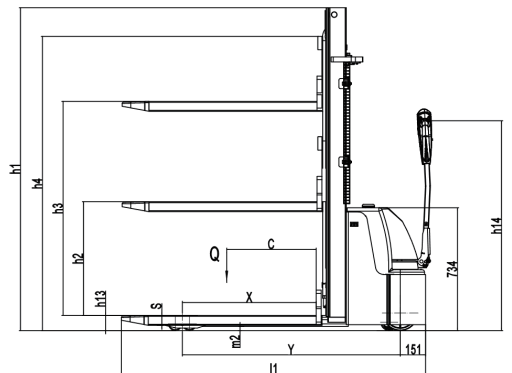
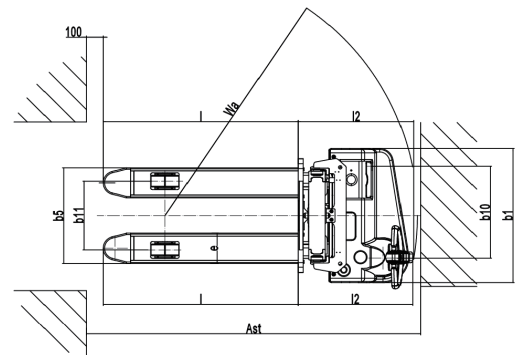
5.1	Travel speed, laden/ unladen	km/h	4.0/ 4.4	
5.2	Lift speed, laden/ unladen	m/s	0.087/0.148	
5.3	Lowering speed, laden/ unladen	m/s	0.125/0.117	
5.8	Max. gradeability, laden/ unladen	%	5 / 10	
5.10	Service brake		Electromagnetic	

Electric- motor

6.1	Drive motor rating S2 60min	kW	0.75	
6.2	Lift motor rating S3 10%	kW	2.2	
6.3	Battery according to DIN 43531/35/36 A, B, C, no		No	
6.4	Battery voltage, nominal capacity K5	V / Ah	2x12/75	
6.5	Battery weight	kg	2x20	
6.6	Energy consumption according to DIN EN 16796	kWh/h	0.6	

Other Details

8.1	Type of drive control		AC	
8.4	Sound pressure at the driver's seat according to DIN EN 12053	dB(A)	<70	



PSL Model (PSE15L-C2)

Model	Lowered mast height h1 (mm)	Free lift height h2 (mm)	Lift height h3 (mm)	Extended mast height h4 (mm)	Lift+fork height h3+h13 (mm)
Single mast	1980	1508	1513	1985	1600
	2380	1908	1913	2385	2000
Double mast	1932	78	2963	3339	2900
	2082	78	3113	3639	3200
	2282	78	3513	4039	3600