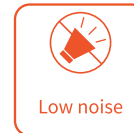


# RT 15Q

## Sit-on Reach Truck

RT15Q light duty reach truck is designed for light duty application scenario. It adopts 24V battery, EPS system, manual operated multiple-way valve, with capacity of 1500kg, the maximum lifting height is up to 5500mm. It has small turning radius, and is flexible and smart in use. It is applicable to store and stack goods in factories, warehouses, supermarkets, docks and other places.



## Safety, high efficiency and energy saving

### Hydraulic system:

Reasonable soft and hard pipe layout ensures heat dissipation, sealing, durability, safety and high efficiency of the hydraulic system.

### Mast system:

The mast has the function of moving forward to realize the taking and placing of goods before and after when the truck does not need to move, which is convenient and safe. High strength mast ensures high load capacity of the whole truck.

### Energy saving system:

When braking, the motor automatically cuts off power to minimize power consumption and prolong battery working time. The application of regenerative braking technology can effectively reduce the wear of braking system, effectively ensure the safety of braking and high efficiency of energy recovery.

### Safety system:

The mast pipeline system is equipped with safety speed limiting valve to effectively control the falling speed of goods. The high standard of technology and high quality materials enable NOBLELIFT forklift to perform excellently even under harsh conditions.



## Flexible turning radius

The truck in narrow aisle can safely turn to load and unload goods.

## Comfortable driving



Multifunction instrument



Small diameter steering wheel



Emergency stop button / horn switch



Multiple unit valve



Adjustable seat



Rear view mirror



Small turning radius

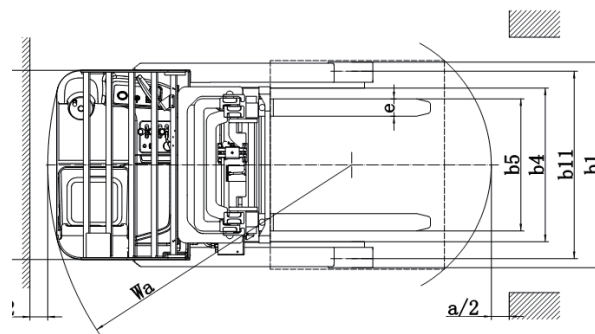
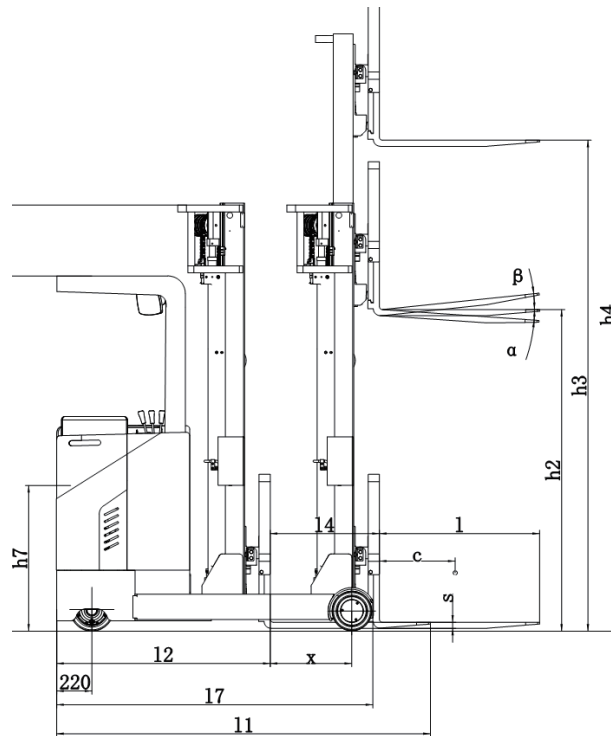
**1745MM**

## Reliable quality and convenient stacking

AC drive system, floating drive axle, electric steering, and high precision gearbox ensure the flexible steering and excellent driving function.



Types		RT15Q		
Door frame		5500mm		
h3 (mm)	Q (kg)			C (mm)
	800	600	500	
6000	1000	800	600	500
5500	1100	900	700	600
5000	1200	1000	800	700
4500	1300	1100	900	800
4000	1500	1300	1100	900
3300				1100



## Type sheet for industrial truck acc. to VDI 2198

1KG=2.2LB 1INCH=25.4MM

Identification							
1.2	Manufacturer's type designation		RT15Q				
1.3	Drive:electric(battery or mains),diesel,petrol gas>manual)		Battery				
1.4	Type of operation(hand,pedestrian,standing,seated,order-picker)		Pedestrian				
1.5	Load capacity/rated load	Q(kg)	1500				
1.6	Load centre distance	c(mm)	500				
1.8	Load distance,centre of drive axle to fork	x(mm)	470				
1.9	wheelbase	y(mm)	1494				
Weights							
2.1	Service weight incl. battery	kg	2050	2100	2200	2250	2300
Wheels, Chassis							
3.1	Type:solid rubber,superelastic,pneumatic,polyurethane		pu				
3.2	Tyres size,front	Øxw (mm)	Ø250 ×82				
3.3	Tyres size,rear	Øxw (mm)	Ø230×100				
3.4	Steering wheel size	Øxw (mm)	Ø180×76				
3.5	Wheels, number front/rear(x=driven wheels)		1x+2/2				
3.6	Tread, front	b10(mm)	647				
3.7	Tread, rear	b11(mm)	1090				
Basic Dimensions							
4.1	Mast/fork carriage tilt forward/backward	α/β(°)	2/4				
4.2	lowered mast height	h1(mm)	2113	2463	2113	2463	2638
4.3	Free lift	h2(mm)	-	-	2463	1800	1950
4.4	Lift height	h3(mm)	3000	3600	4500	5500	6000
4.5	Extended mast height	h4(mm)	3900	4500	5400	6400	6900
4.15	Height of lowered forks	h13(mm)	40				
4.19	Overall length	l1(mm)	2146				
4.20	Length to face of forks	l2(mm)	1226				
4.21	Overall width	b1/b2(mm)	1184/1090				
4.22	Fork dimensions	s/e/l(mm)	35/100/920				
4.26	Distance between support arms	b4(mm)	883				
4.28	Reach distance	l4(mm)	567/627				
4.32	Ground clearance,centre of wheelbase	m2(mm)	60				
4.33	Aisle width for pallets 1000×1200 crossways	Ast(mm)	2748				
4.34	Aisle width for pallets 800×1200 lengthways	Ast(mm)	2780				
4.35	Turning radius	Wa(mm)	1745				
Performance Data							
5.1	Travel speed,laden/unladen	km/h	6.5/6.5				
5.2	Lift speed,laden/unladen	m/s	0.1/0.165				
5.3	lowering speed,laden/unladen	m/s	0.12/0.11				
5.8	Max. gradeability, with/without load	%	5/8				
5.10	Service brake		Electromagnetic				
E-Motor							
6.1	Drive motor rating	kW	2.6				
6.2	Lift motor rating	kW	4.0				
6.3	Battery acc. to DIN 43531/ 35/ 36 A, B, C, no		4PzS				
6.4	Battery voltage, nominal capacity	V/Ah	24 / 400				
Other Details							
8.1	Type of drive control		AC-Speed Control				
8.4	Sound level at driver's ear according to EN 12 053	dB(A)	68				