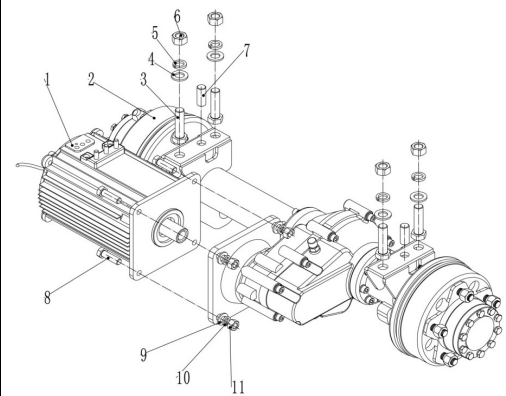


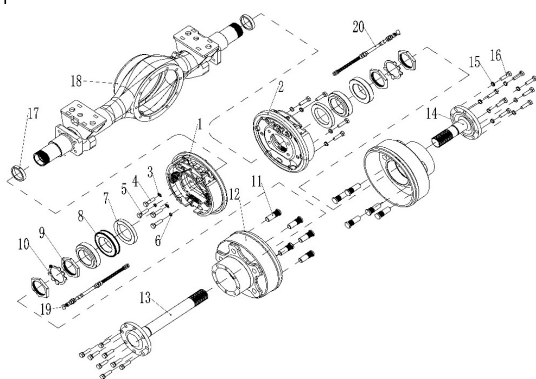
驱动系统/DRIVE SYSTEM



序号/NO	编码/SN	名称/Name	Name	数量/QTY	备注/Remark
1	272332010002	电机YSQ	Motor	1	杨氏电机 (停产)
1	920900100121	电机(交流)HPQ	Motor	1	合普电机
1	272398532501	编码器 (YSQ)	Encoder	1	配杨氏电机
1	255098513251	编码器 (HPQ)	Encoder	1	配合普电机
2	272313511001	驱动桥总成	Drive axle	1	
3	910100300074	螺栓GB5783-M16x60-8.8	Bolt GB5783-M16x60-8.8	4	
4	910400100010	平垫圈GB97.1-16-200HV	The flat washer GB97.1-16-200 HV	4	
5	910400500010	弹簧垫圈GB93-16	Spring washer GB93-16	4	
6	910300100010	螺母GB6170-M16-10	Nut GB6178 M16-8	4	
7	910600100019	圆柱销GB119.2-16x40	The cylindrical pin GB119.2-16	2	
8	910100300052	螺栓GB5783-M12x40-8.8	Bolt GB5783-M12x40-8.8	4	
9	910400100008	平垫圈GB97.1-12-200HV	The flat washer GB97.1-12-200 HV	4	
10	910400500008	弹簧垫圈GB93-12	Spring washer GB93-12	4	
11	910300100008	螺母GB6170-M12-10	Nut GB6178 M12-8	4	

1

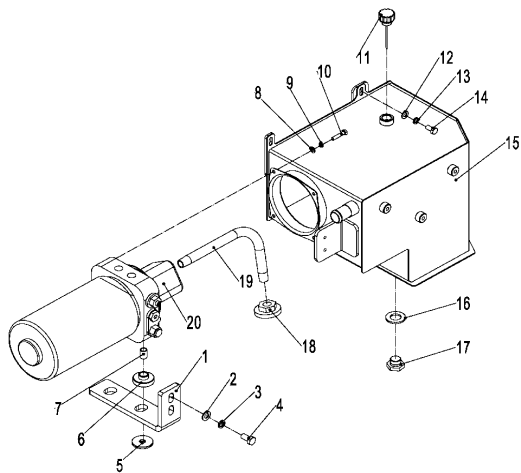
驱动桥/DRIVE AXLE



序号/NO	编码/SN	名称/Name	Name	数量/QTY	备注/Remark
1	272398013510	180制动器L-JH2143502010		1	
2	272398013511	180制动器R-JH2143502020		1	
3	910400500019	弹垫8		2	
4	272398523501	制动器固定螺钉JH2142401016		2	
5	272398523502	制动器定位螺钉JH2142401017		2	
6	272398523502	制动器定位螺钉垫片JH2142401018		2	
7	272398523503	制动鼓防尘油封JH2142401019		2	φ60*φ80*10
8	910700600041	半轴轴承32010		2	
9	272398523504	轴承锁紧螺母JH2142401021		2	M50
10	272398523505	锁紧螺母止动片JH2142401022		2	
11	272398523506	轮胎螺钉JH2142401023		10	M14*43
12	272398523507	180制动鼓JH2142401024		2	
13	272398523508	半轴L-JH2142401025		1	
14	272398523509	半轴总成R-JH2142401026		1	
15	272398523510	半轴锁紧弹垫		16	
16	272398523511	半轴锁紧螺钉M8*25		16	
17	272398523512	半轴油封JH2142401027		2	φ40*φ32*8
18	272398523513	12T桥管JH2142401028		1	
19	272312011003	左制动拉索		1	
20	272312011004	右制动拉索		1	

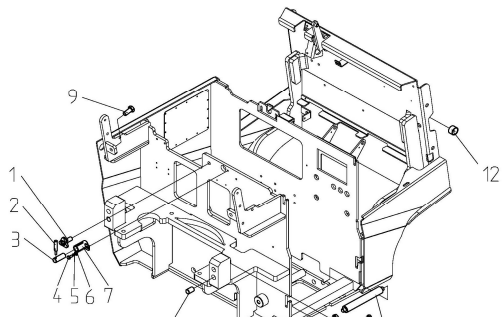
起升电机及油箱安装/MOTOR AND OIL TANK INSTALLATION

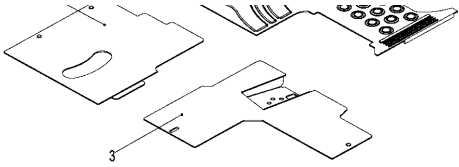
序号/NO	编码/SN	名称/Name	Name	数量/QTY	备注/Remark
1	272319021008	安装板 (起升电机)		1	
2	910400100007	平垫圈GB97.1-10-200HV		4	
3	910400500007	弹簧垫圈GB93-10		4	
4	910100300036	螺栓GB5783-M10x25-8.8		4	
5	255032520002	垫圈Φ40xΦ11x4		2	
6	255032520003	减振垫		2	
7	271519021009	加强套Φ13xΦ10x18		2	
8	910400100005	平垫圈GB97.1-6-200HV		4	
9	910400500005	弹簧垫圈GB93-6		4	
10	910100300011	螺栓GB5783-M6x20-8.8		4	
11	271519010002	加油口盖		1	
12	910400100006	平垫圈GB97.1-8-200HV		2	
13	910400500006	弹簧垫圈GB93-8		2	
14	910100300020	螺栓GB5783-M8x16-8.8		2	
15	272319011001	油箱焊合		1	
16	910800900001	组合垫圈JB982-20		1	
17	255019020015	放油塞M20x1.5		1	
18	271598532501	过滤器		1	
19	271532520001	吸油管		1	
20	272332510003	油泵电机(永磁)		1	



车架/FRAME

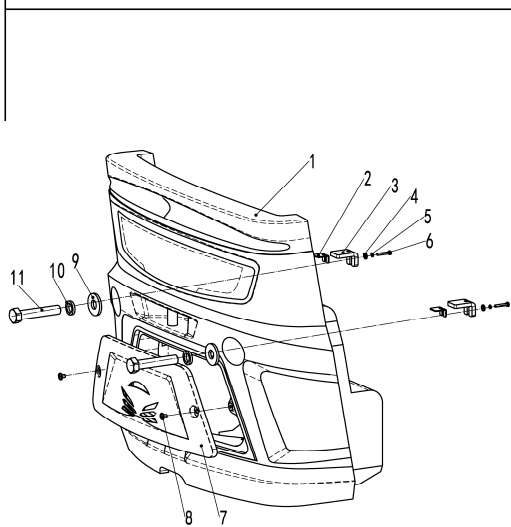
序号/NO	编码/SN	名称/Name	Name	数量/QTY	备注/Remark
A	271121511001	车架焊合		1	
1	255021020059	星形把手		1	
2	255021520100	拨杆		1	
3	255021520099	保险销		1	
4	910100300020	螺栓GB5783-M8x16-8.8		1	
5	910400500005	弹簧垫圈GB93-6		1	
6	910400100006	平垫圈GB97.1-8-200HV		1	
7	271521511011	阀杆座焊合		1	
8	281221521092	圆钢		2	
9	910100300069	螺栓GB5783-M16x35-8.8		4	
10	910100300055	螺栓GB5783-M12x55-8.8		2	
11	271521521091	滚轴		6	
12	940500100046	复合套Φ30xΦ34x20-SF-1		2	
13	255021020059	星形把手		1	





6

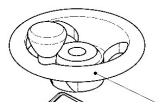
平衡重安装/BALANCED INSTALLATION



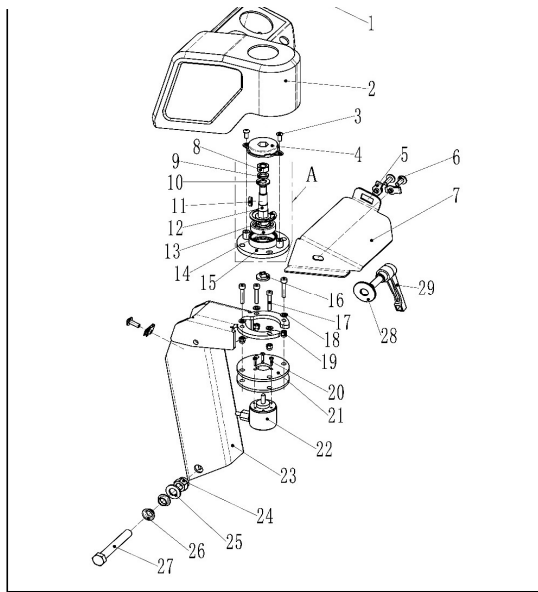
序号/NO	编码/SN	名称/Name	Name	数量/QTY	备注/Remark
1	271323021001	平衡重(小电池)		1	
1	271123021001	平衡重(大电池)		1	选装
2	255023020006	调整垫		1	
3	281223021007	垫板(配重)		2	
4	910400100005	平垫圈GB97.1-6-200HV		2	
5	910400500005	弹簧垫圈GB93-6		2	
6	910100300014	螺栓GB5783-M6x35-8.8		2	
7	271523021002	平衡重后盖板		1	
8	941100100001	螺钉M8x12-8.8		2	
9	255023020007	垫圈Φ60xΦ25x6		2	
10	910400500013	弹簧垫圈GB93-24		2	
11	910100100101	螺栓GB5782-M24x120-8.8		2	

7

转向装置安装/STEERING DEVICE

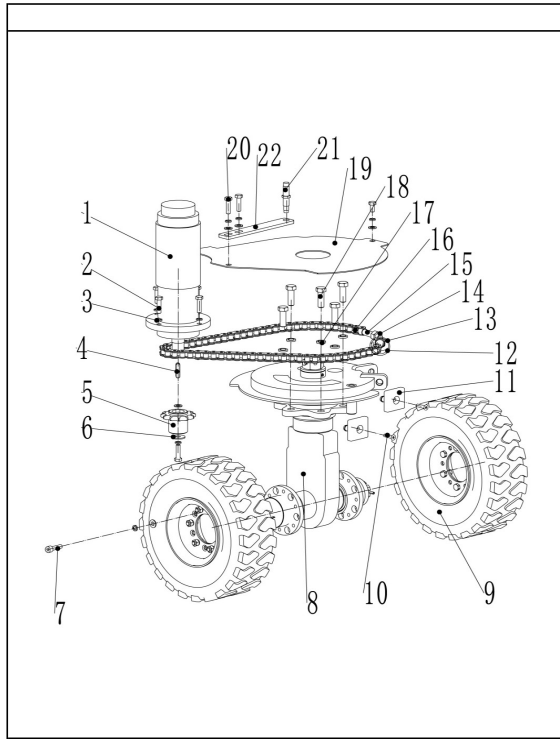


序号/NO	编码/SN	名称/Name	Name	数量/QTY	备注/Remark
1	271531511020	方向盘Φ202		1	
2	271531521010	仪表罩		1	
3	910200300012	螺钉GB70.2-M5x12-4.8		2	
4	271531511021	旋转阻尼器		1	
5	940400400001	黄片螺母M6		3	



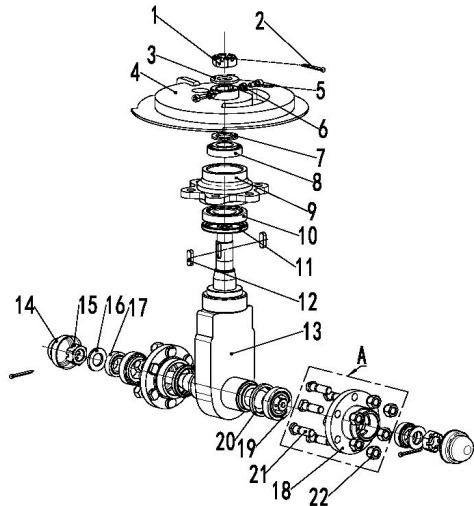
6	941100100009	螺钉M6x12-8.8		3	
7	271531521011	仪表罩下封板		1	
8	910300100007	螺母GB6170-M10-10		1	
9	910400500007	弹簧垫圈GB93-10		1	
10	910400100007	平垫圈GB97.1-10-200HV		1	
11	910600800002	平键GB1096-4x12-A		1	
12	271531522001	过渡轴		1	
13	910401400011	孔用弹性挡圈GB893.1-37		1	
14	910700200045	轴承GB276-61904-2RS		1	
15	271531512010	轴承座焊合件		1	
16	505931520002	连接块		1	
17	910200200026	螺钉GB70.1-M5x30-8.8		4	
18	910400100004	平垫圈GB97.1-5-200HV		4	
19	910300500002	螺母GB889.1-M5-10		4	
20	910200500012	螺钉GB818-M3x16-4.8		3	
21	271531522018	电位计固定板		2	
22	271533510001	编码器G138S6-052S5R03-00256 (200mm)		1	
23	271531512001	转向管柱焊合(电位计)		1	
24	910300500006	螺母GB889.1-M12-10		1	
25	910400100008	平垫圈GB97.1-12-200HV		1	
26	940500200028	复合套(带角)Φ12xΦ14x7-SF-1		2	
27	910100100056	螺栓GB5782-M12x90-8.8		1	
28	910400200004	大垫圈GB96.1-10-200HV		1	
29	271531510006	可调手柄		1	
A	271531512003	过渡轴总成(电位计)		1	

转向桥安装/STEERING AXLE INSTALLATION



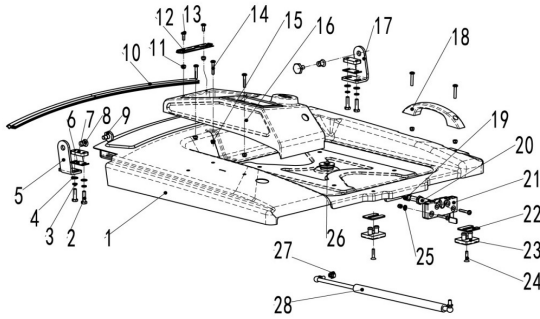
序号/NO	编码/SN	名称/Name	Name	数量/QTY	备注/Remark
1	920900100090	电机(直流)	Motor	1	
2	910100300023	螺栓GB5783-M8x25-8.8		4	
3	910400500006	弹簧垫圈GB93-8		7	
4	910600800021	平键GB1096-8x32-A		1	
5	272316021032	10B链轮		1	
6	271514021004	垫圈Φ9XΦ28X2		1	
7	272315521005	后轮固定螺栓		12	
8	272316010001	转向桥总成		1	
9	-----	转向轮总成		2	见图:前后轮总成
10	910200400019	螺钉GB70.3-M6x25-8.8		2	
11	272316021037	缓冲垫(链条)		2	
12	255032520003	减振垫		2	
13	910400100008	平垫圈GB97.1-12-200HV		2	
14	910300100008	螺母GB6170-M12-10		2	
15	272316021013	链条固定螺栓		2	
16	272316021033	10B-1链条		1	
17	910400500008	弹簧垫圈GB93-12		1	
18	910100300051	螺栓GB5783-M12x35-8.8		6	
19	272316021007	链条护板		1	
20	910100300020	螺栓GB5783-M8x16-8.8		3	
21	920200400008	接近开关		1	
22	272316021035	接近开关支架		1	

转向桥/STEERING AXLE

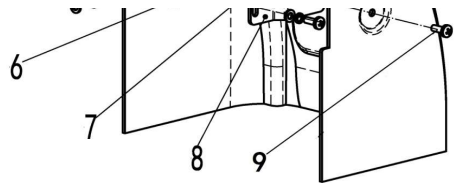


序号/NO	编码/SN	名称/Name	Name	数量/QTY	备注/Remark
1	272316021025	开槽螺母M27x2		1	
2	910600600038	开口销GB91-5x45		3	
3	910400100015	平垫圈GB97.1-27-200HV		1	
4	272316011002	铰链盘焊合		1	
5	910200200057	螺钉GB70.1-M8x20-8.8		2	
6	910300100006	螺母GB6170-M8-10		2	
7	272316021011	垫圈Φ47xΦ31x3		1	
8	910700600002	轴承GB297-30206		1	
9	272316021031	支撑轮毂		1	
10	910700600004	轴承GB297-30208		1	
11	910800700004	骨架油封		1	
12	910600800026	平键GB1096-10x30-A		1	
13	272316011001	转向桥体焊合		1	
14	272316021022	轮毂盖		2	
15	272316021023	开槽螺母M24x2		2	
16	910400100014	平垫圈GB97.1-24-200HV		2	
17	910700600015	轴承GB297-32005		2	
18	272316021021	后轮毂		2	
19	910700600045	轴承GB297-32007		2	
20	910800400026	防尘圈		2	
21	254198526070	轮毂螺栓		12	
22	254198526071	轮毂螺母		12	
A	272316011003	轮毂总成		1	

座椅盖板安装/SEAT COVER INSTALLATION



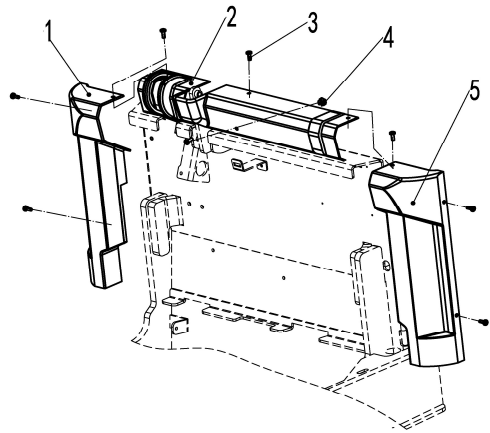
序号/NO	编码/SN	名称/Name	Name	数量/QTY	备注/Remark
1	272321011002	箱盖焊合(12E)		1	
2	910100300024	螺栓GB5783-M8x30-8.8		4	
3	910400100006	平垫圈GB97.1-8-200HV		4	
4	910400500006	弹簧垫圈GB93-8		4	
5	272321021008	铰链板(右)		1	
6	271521021015	调整垫		2	
7	271521021007	固定板(顶盖底座)		2	
8	940500200028	复合套(带角)Φ12xΦ14x7-SF-1		2	
9	271521021043	铰制螺栓M10x19		2	
10	255022521093	密封条(180°)		0.8m	
11	910300100004	螺母GB6170-M5-10		2	
12	255021020067	文件夹		4	
13	910200500040	螺钉GB818-M5x16-4.8		2	
14	910200500056	螺钉GB818-M6x35-4.8		7	
15	910300500003	螺母GB889.1-M6-10		7	
16	271521021003	顶盖装饰罩		1	
17	272321021009	铰链板(左)		1	
18	255021020020	拉手		1	
19	910300500006	螺母GB889.1-M12-10		1	
20	255021020052	锁舌(顶盖)		1	
21	255021010010	顶盖锁		1	
22	255021020071	调整垫(缓冲垫)		2	
23	255021020068	缓冲垫		2	
24	910200400019	螺钉GB70.3-M6x25-8.8		2	
25	910400100005	平垫圈GB97.1-6-200HV		2	
26	255021020046	保护圈Φ35		2	
27	910300100006	螺母GB6170-M8-10		1	
28	940400100028	气弹簧500N(D620)-自锁		1	



13

仪表架护罩安装/INSTRUMENT FRAME COVER INSTALLATION

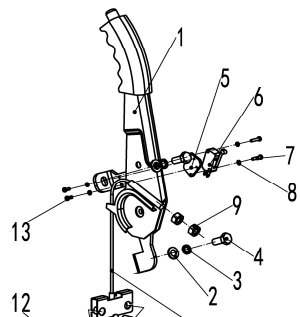
序号/NO	编码/SN	名称/Name	Name	数量/QTY	备注/Remark
1	271521021004	仪表架左罩		1	
2	271521021006	仪表架中罩		1	
3	910200500053	螺钉GB818-M6x20-4.8		7	
4	940801500001	卡式螺母M6		1	
5	271521021005	仪表架右罩		1	

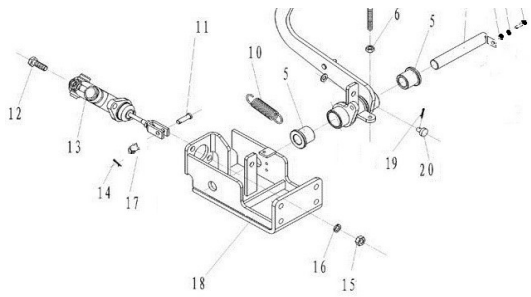


14

驻车制动安装/PARKING BRAKING

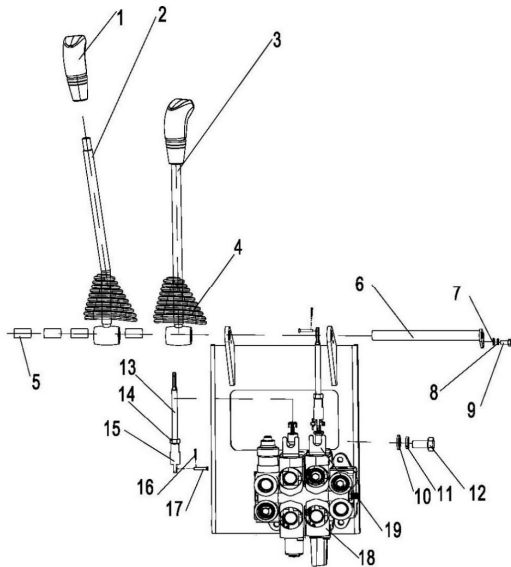
序号/NO	编码/SN	名称/Name	Name	数量/QTY	备注/Remark
1	271512011001	手刹		1	
2	910400100006	平垫圈GB97.1-8-200HV		4	
3	910400500006	弹簧垫圈GB93-8		4	
4	910100300022	螺栓GB5783-M8x20-8.8		2	
5	271512021002	行程开关固定板		1	
6	920200300009	行程开关		2	
7	910200500012	螺钉GB818-M3x16-4.8		2	
8	910400500002	弹簧垫圈GB93-3		4	
9	910300100006	螺母GB6170-M8-10		2	
10	271512012001	过渡连接座		2	
11	271512013001	手刹线		2	
12	271512021001	安装支架(拉线)		1	
13	910200500010	螺钉GB818-M3x8-4.8		2	





11	910600700033	销轴GB882-B10x30x3.2	1	
12	910100300037	螺栓GB5783-M10x30-8.8	2	
13	271511512001	制动总泵	1	
14	910600600026	开口销GB91-3.2x20	1	
15	910300100007	螺母GB6170-M10-10	2	
16	910400500007	弹簧垫圈GB93-10	2	
17	940500100048	复合套φ10xφ12x8-SF-1	1	
18	271511511004	脚踏制动支架焊合	1	
19	910600600017	开口销GB91-2.5x16	1	
20	255011520010	缓冲垫	1	

多路换向阀操纵(二联) / MULTIPLEX VALVE OPERATION (two)

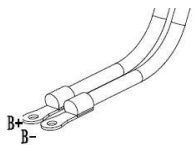


序号/NO	编码/SN	名称/Name	Name	数量/QTY	备注/Remark
1	255024520023	手柄球(倾斜)		1	
2	271524511005	操纵杆焊合(倾斜)		1	
3	272324511001	操纵杆总成(起升按钮)		1	
4	255024520065	护套		2	
5	940500100006	复合套φ16xφ18x15-SF-1		4	
6	255024510009	带耳轴φ16x168		1	
7	910400100005	平垫圈GB97.1-6-200HV		9	
8	910400500005	弹簧垫圈GB93-6		7	
9	910100300009	螺栓GB5783-M6x12-8.8		5	
10	910400100007	平垫圈GB97.1-1-10-200HV		6	
11	910400500007	弹簧垫圈GB93-10		6	
12	910100300036	螺栓GB5783-M10x25-8.8		4	
13	271524521017	连接杆		2	
14	910300100006	螺母GB6170-M8-10		2	
15	255025020003	接头		2	
16	941100800001	销轴B4.75x20-c1B		4	
17	910600600011	开口销GB91-2x12		4	
18	271524511001	多路阀(二联)		1	
19	255024520027	支架(行程开关)		2	

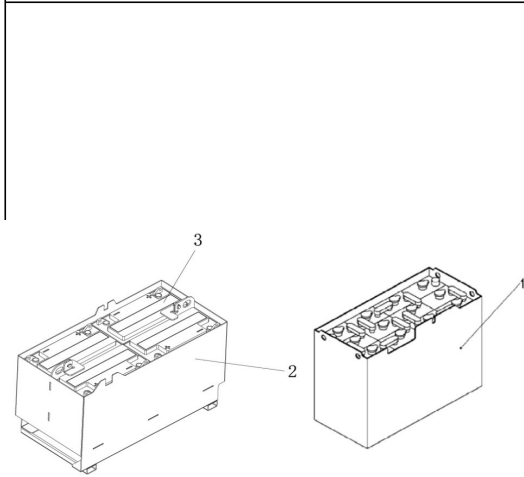
多路换向阀操纵(三联) / MULTIPLEX VALVE OPERATION (three)

/1 /2 /3 /4 /5

序号/NO	编码/SN	名称/Name	Name	数量/QTY	备注/Remark
1	255025020002	手柄球(属具1)		1	
2	271525011006	操纵杆焊合(属具1)		1	
3	255024520023	手柄球(倾斜)		1	

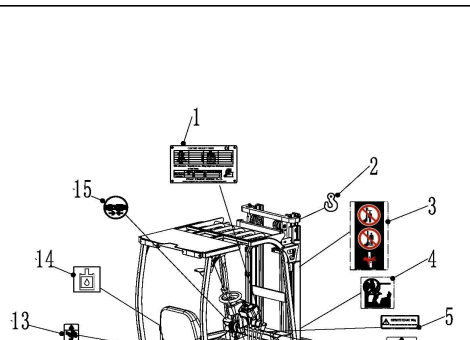


蓄电池/BATTERY

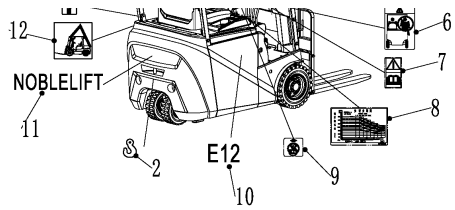


序号/NO	编码/SN	名称/Name	Name	数量/QTY	备注/Remark
1	272337010006	牵引电池48V-3VBS210		1	选配
	272337010014	牵引电池48V-3VBS240		1	选配
	272337010007	牵引电池48V-3VBS165		1	选配
	272337010008	牵引电池48V-3VBS180		1	选配
2	272337010003	牵引电池48V-6D-160(4×12)		1	标配
3	272337011001	电动车铅酸蓄电池12V160Ah		4	

标牌(中文)/LABEL(Chinese)

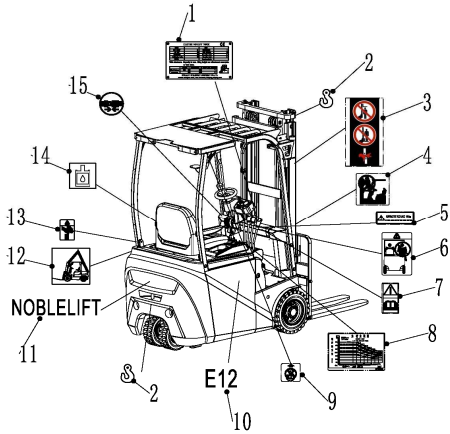


序号/NO	编码/SN	名称/Name	Name	数量/QTY	备注/Remark
1	255047520001	铭牌(中文)		1	
2	941200300001	标贴(吊点)		3	
3	941200100004	标贴(堆高组合警示)		2	
4	255047020009	禁止攀爬		1	
5	255047521004	侧移减重标识		1	选装
6	255047020013	禁止座人		1	
7	941200300011	标贴(警告阅读)		1	
8	271547520002	载荷曲线		1	
9	255047020008	禁止起吊标识		2	
10	272347020001	产品型号标识		2	
11	255047020018	额定标志		2	
12	255047020019	整车吊装		1	
13	255047020014	挤手标识		2	
14	255047020004	液压油标贴		1	
15	255047020012	安全带标贴		1	



26

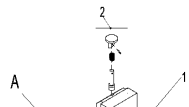
标牌(英文)/LABEL(English)



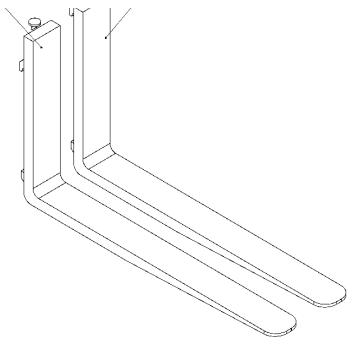
序号/NO	编码/SN	名称/Name	Name	数量/QTY	备注/Remark
1	255047520002	铭牌(英文)		1	
2	941200300001	标贴(吊点)		3	
3	941200100004	标贴(堆高组合警示)		2	
4	255047020009	禁止攀爬		1	
5	255047521004	侧移减重标识		1	选装
6	255047020013	禁止座人		1	
7	941200300011	标贴(警告阅读)		1	
8	271547520002	载荷曲线		1	
9	255047020008	禁止起吊标识		2	
10	272347020001	产品型号标识		2	
11	255047020018	额定标志		2	
12	255047020019	叉车吊装		1	
13	255047020014	挤手标识		2	
14	255047020004	液压油标贴		1	
15	255047020012	安全带标贴		1	

27

货叉/FORK

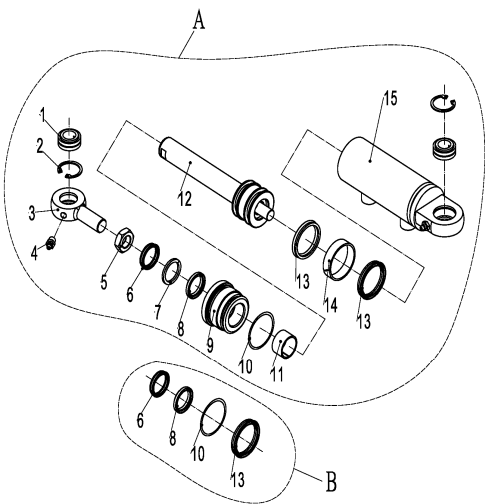


序号/NO	编码/SN	名称/Name	Name	数量/QTY	备注/Remark
A	940100100001	挂钩IIA型货叉100x35x920	Fork 100 x35x920	2	包括/inc.1-2
A	940100100002	挂钩IIA型货叉100x35x950	Fork 100 x35x950	2	
A	940100100003	挂钩IIA型货叉100x35x1070	Fork 100 x35x1070	2	
A	940100100004	挂钩IIA型货叉100x35x1150	Fork 100 x35x1150	2	
A	940100100005	挂钩IIA型货叉100x35x1220	Fork 100 x35x1220	2	
A	940100100006	挂钩IIA型货叉100x35x1370	Fork 100 x35x1370	2	
A	940100100029	挂钩IIA型货叉100x35x1520	Fork 100 x35x1520	2	
1	▲	货叉体	Fork body	2	



2	253098514101	提销总成	Lift pin assembly	2	

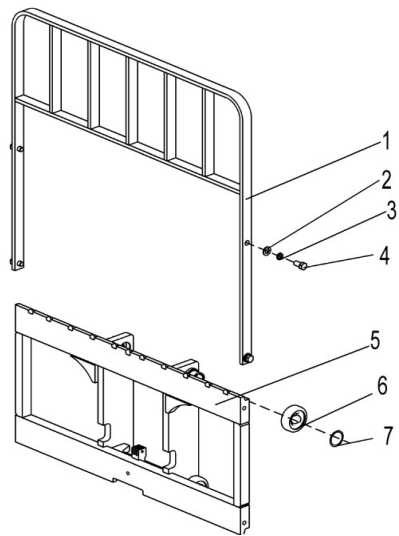
倾斜油缸/TILT CYLINDER



序号/NO	编码/SN	名称/Name	Name	数量/QTY	备注/Remark
A	272320511001	左倾斜油缸3/5	Tilting cylinder 3/5	1	H<4000
A	272320511003	右倾斜油缸3/5	Tilting cylinder 3/5	1	H<4000
A	272320511002	左倾斜油缸3/3	Tilting cylinder 3/3	1	H≥4000
A	272320511004	右倾斜油缸3/3	Tilting cylinder 3/3	1	H≥4000
B	272398510007	密封件维修包（倾斜油缸）	Seal package (inclined oil cylinder)	1	
1	▲	关节轴承20	Joint bearing 20	2	
2	▲	孔用弹性挡圈20	Hole with Retaining ring	2	
3	▲	耳环3	earrings3	1	
4	▲	直通式压注油嘴M10	Straight through type pressure injector nozzle M10	2	
5	▲	螺母GB6171-M20x1.5-10	Nut GB6171-M20x1.5-10	1	
6	▲	防尘圈	Shaft	1	
7	▲	挡片30 X 38 X 3	Block slice 30 x38x3	1	
8	▲	UN30X38X5	UN30X38X5	1	
9	▲	内置缸盖	Guide sleeve	1	
10	▲	O形圈	O-rings	1	
11	▲	钢背轴承30 X 34 X 4	Joint bearing 30 X 34 X 4	1	
12	▲	活塞杆总成	The piston rod	1	
13	▲	孔用密封圈	Hole with 50 x60x6	1	
14	▲	支承环30 X 34 X 20	Bearing ring 30 X 34 X 20	1	
15	▲	缸筒	Cylinder liner	1	

货叉架（标准门架）/FORK ARM CARRIER (stand mast)

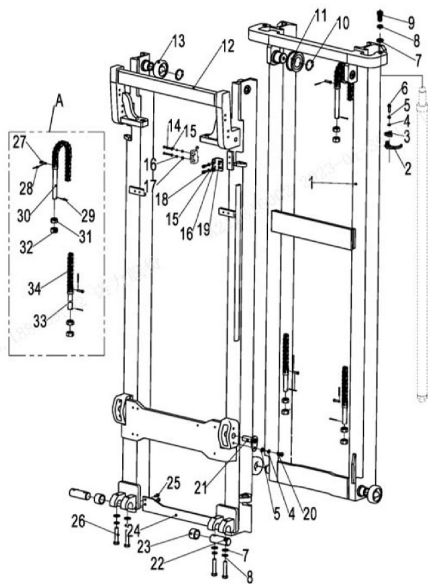
序号/NO	编码/SN	名称/Name	Name	数量/QTY	备注/Remark
1	271540511001	挡货架架焊合(825x878)	Shelf welding (825x878)	1	
2	910100300050	螺栓GB5783-M12x30-8.8	Bolt GB5783 M12x30-8.8	4	



3	910400500008	弹簧垫圈GB93-12	Spring washer GB93-12	4	
4	910400100008	平垫圈GB97.1-12-200HV	The flat washer GB97.1-12-200 HV	4	
5	271538011001	货叉架焊合(二级标准门架)	Fork rack (standard mast)	1	
6	940200300003	复合滚轮Φ70.6-range=43.5-47.5	Composite roller Φ70.6-	4	
7	910401300018	轴用弹性挡圈GB894.1-35	Axis with elastic catch GB894.1-35	4	

30

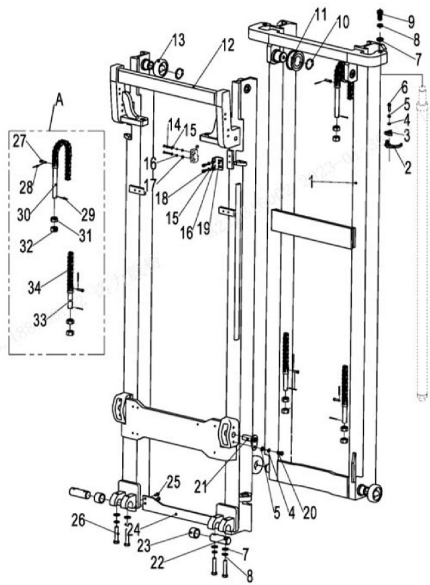
门架 (标准门架)/MAST (stand mast)



序号/NO	编码/SN	名称/Name	Name	数量/QTY	备注/Remark
1	272344012001	内门架(2500)	Inner mast (2500)	1	H=2500
1	272344012002	内门架(2700)	Inner mast (2700)	1	H=2700
1	272344012003	内门架(3000)	Inner mast (3000)	1	H=3000
1	272344012004	内门架(3300)	Inner mast (3300)	1	H=3300
1	272344012005	内门架(3500)	Inner mast (3500)	1	H=3500
1	272344012006	内门架(3700)	Inner mast (3700)	1	H=3700
1	272344012007	内门架(4000)	Inner mast (4000)	1	H=4000
2	275244020003	外抱箍	The hoop	2	
3	275244020004	内抱箍	The hoop	2	
4	910400100006	平垫圈GB97.1-8-200HV	The flat washer GB97.1-8-200 HV	6	
5	910400500006	弹簧垫圈GB93-8	Spring washer GB93-8	6	
6	910100300024	螺栓GB5783-M8x30-8.8	Bolt GB5783 M8x30-8.8	4	
7	910400100008	平垫圈GB97.1-12-200HV	The flat washer GB97.1-12-200 HV	6	
8	910400500008	弹簧垫圈GB93-12	Spring washer GB93-12	6	
A	272344014001	起升链条LH1034-95	Lifting chain LH-95	2	H=2500
A	272344014002	起升链条LH1034-101	Lifting chain LH-101	2	H=2700
A	271544014003	起升链条LH1034-111	Lifting chain LH-111	2	H=3000
A	272344014006	起升链条LH1034-123	Lifting chain LH-123	2	H=3300
A	272344014003	起升链条LH1034-127	Lifting chain LH-127	2	H=3500
A	271544514008	起升链条LH1034-133	Lifting chain LH-133	2	H=3700
A	272344014004	起升链条LH1034-145	Lifting chain LH-145	2	H=4000
9	910100300051	螺栓GB5783-M12x35-8.8	Bolt GB5783-M12x35-8.8	2	
10	910401300020	轴用弹性挡圈GB894.1-40	Axis with elastic catch GB894.1-40	6	
11	940200500005	链轮轴承782208-Φ70xΦ40x21	Sprocket wheel bearing	2	
12	272344011001	外门架(2500)	Outer mast 2500	1	H=2500
12	272344011002	外门架(2700)	Outer mast 2700	1	H=2700
12	272344011003	外门架(3000)	Outer mast 3000	1	H=3000
12	272344011004	外门架(3300)	Outer mast 3300	1	H=3300
12	272344011005	外门架(3500)	Outer mast 3500	1	H=3500
12	272344011006	外门架(3700)	Outer mast 3700	1	H=3700
12	272344011007	外门架(4000)	Outer mast 4000	1	H=4000
13	940200300003	复合滚轮Φ70.6-range=43.5-47.5	Composite roller Φ70.6-	4	
14	910200500028	螺钉GB818-M4x30-4.8	Chain bolt GB818-M4x30-4.8	2	

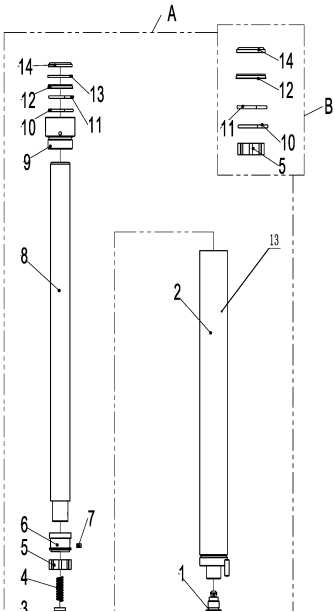
31

门架 (标准门架)/MAST (stand mast)



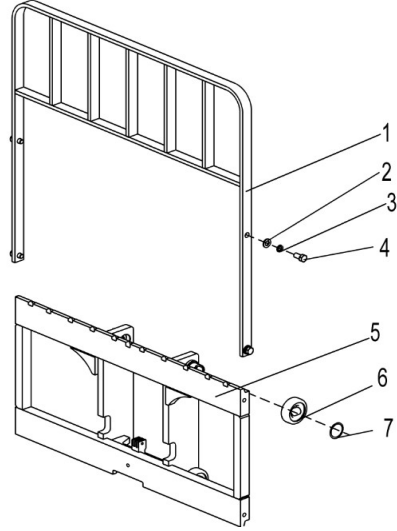
序号/NO	编码/SN	名称/Name	Name	数量/QTY	备注/Remark
15	910400100005	平垫圈GB97.1-6-200HV	The flat washer GB97.1-6-200 HV	2	
16	910400500005	弹簧垫圈GB93-6	Spring washer GB93-6	2	
17	910300100003	螺母GB6170-M4-10	Nut GB6170-M4-10	2	
18	910200200035	螺钉GB70.1-M6x16-8.8	Chain bolt GB70.1-M6x16-8.8	2	
19	271544020006	安装板(限位开关)	Mounting plate (limit switch)	1	
20	910100300022	螺栓GB5783-M8x20-8.8	Bolt GB5783-M8x20-8.8	4	
21	272344010002	带耳轴Φ20x55	With trunnion Φ20x55	4	
22	272344021008	门架固定销轴	Door frame fixed pin shaft	2	
23	272344021080	耐磨套Φ30xΦ38x25	Wear resistant sleeve	2	
24	272344021006	胶管护板	Hose guard plate	1	
25	910200500052	螺钉GB818-M6x16-4.8	Chain bolt GB70.1-M6x16-4.8	3	
26	910100300056	螺栓GB5783-M12x60-8.8	Bolt GB5783-M12x60-8.8	4	
27	271544020108	LH1034链条销轴	LH1034 chain pin	2	
28	910600600015	开口销GB91-2x20	Cotter pin GB91-2x20	2	
29	910600600030	开口销GB91-3.2x30	Cotter pin GB91-3.2x30	2	
30	271544020107	链条螺栓M16x1.5x142.5	Chain bolt m16x1.5x142.5	1	
31	254144020066	球面螺母M16x1.5	Spherical nut m16x1.5	2	
32	910300200008	螺母GB6171-M16x1.5-10	Nut GB6171 - M16x1.5-10	2	
33	271544020109	链条螺栓M16x1.5x87	Chain bolt m16x1.5x87	1	
34	910900400004	板式链GB6074-LH1034	Plate chain GB6074 - LH1034	1	

起升油缸 (标准门架) /LIFT CYLINDER(stand mast)



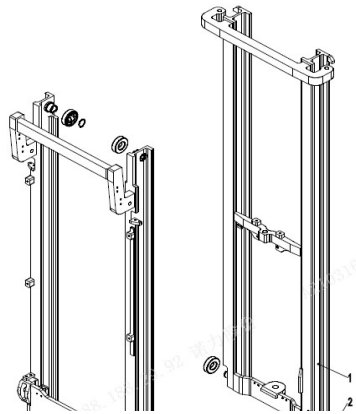
序号/NO	编码/SN	名称/Name	Name	数量/QTY	备注/Remark
A	271544016001	油缸(H=2500)	Oil cylinder Φ 40 xΦ35 x1245	2	H=2500
A	271544016002	油缸(H=2700)	Oil cylinder Φ 40 xΦ35 x1345	2	H=2700
A	271544016003	油缸(H=3000)	Oil cylinder Φ 40 xΦ35 x1495	2	H=3000
A	271544016004	油缸(H=3300)	Oil cylinder Φ 40 xΦ35 x1645	2	H=3300
A	271544016005	油缸(H=3500)	Oil cylinder Φ 40 xΦ35 x1745	2	H=3500
A	271544016006	油缸(H=3700)	Oil cylinder Φ 40 xΦ35 x1845	2	H=3700
A	271544016007	油缸(H=4000)	Oil cylinder Φ 40 xΦ35 x1995	2	H=4000
B	271598510001	密封件维修包(起升油缸)	Seal package	2	包含7件, 1. 3. 5. 11. 12
1	▲	防爆阀	Explosion-proof valve	1	
2	▲	缸筒	cylinder	1	
3	▲	缓冲芯	Buffer core	1	
4	▲	弹簧	spring	1	
5	▲	支承环C35X40X14	Bearing ring C35X40X14	1	
6	▲	活塞	The piston	1	
7	▲	导向螺钉	Guide screw	1	
8	▲	活塞杆	The piston rod	1	
9	▲	缸盖	Cylinder head	1	
10	▲	O型圈	O-rings D45x3. 1	1	
11	▲	O型圈	o-rings	1	
12	▲	轴用密封圈	Shaft with 35 x45x6	1	
13	▲	挡片35x45x3	Catch 35 x45x3	1	
14	▲	防尘套	Dust Jacket	1	

货叉架 (两级全自由门架)/FORK ARM CARRIER(two-stage full free mast)

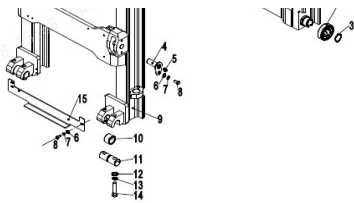


序号/NO	编码/SN	名称/Name	Name	数量/QTY	备注/Remark
1	271540511001	挡货架焊合 (825x878)	Shelf welding (825x878)	1	
2	910100300050	螺栓GB5783-M12x30-8.8	Bolt GB5783 M12x30-8.8	4	
3	910400500008	弹簧垫圈GB93-12	Spring washer GB93-12	4	
4	910400100008	平垫圈GB97.1-12-200HV	The flat washer GB97.1-12-200 HV	4	
5	271538012001	货叉架焊合(二级全自由门架)	Fork rack (two-stage full free mast)	1	
6	940200300003	复合滚轮Φ70.6-range=43.5-47.5	Composite roller Φ70.6-	4	
7	910401300018	轴用弹性挡圈GB894.1-35	Axis with elastic catch GB894.1-35	4	

门架 (两级全自由门架)/MAST(two-stage full free mast)

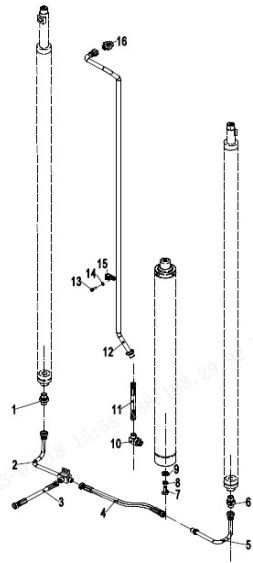


序号/NO	编码/SN	名称/Name	Name	数量/QTY	备注/Remark
1	272343512011	内门架焊合(2000)	Inner mast (2000)	1	H=2000
1	272343512001	内门架焊合(2500)	Inner mast (2500)	1	H=2500
1	272343512002	内门架焊合(2700)	Inner mast (2700)	1	H=2700
1	272343512003	内门架焊合(3000)	Inner mast (3000)	1	H=3000
1	272343512004	内门架焊合(3500)	Inner mast (3500)	1	H=3500
1	272343512005	内门架焊合(3500)	Inner mast (3500)	1	H=3500
1	272343512005	内门架焊合(3500)	Inner mast (3700)	1	H=3700
1	272343512007	内门架焊合(4000)	Inner mast (4000)	1	H=4000
2	940200300001	复合滚轮Φ70-range=43.5-47.5	Composite roller Φ70-range=43.5-47.5 range set figure	4	
2	940200300003	复合滚轮Φ70.6-range=43.5-47.5	Composite roller Φ70.6-range=43.5-47.5 range set figure	4	
3	910401300018	轴用弹性挡圈GB894.1-35	Axis with elastic catch GB894.1-35	4	
4	272344010002	带耳轴Φ20x55	With trunnion Φ20x55	2	
5	▲	黄油嘴	Butter mouth	2	
6	910400100006	平垫圈GB97.1-8-200HV	The flat washer GB97.1-8-200HV	4	
7	910400500006	弹簧垫圈GB93-8	Spring washer GB93-8	4	
8	910100300020	螺栓GB5783-M8x16-8.8	Bolt GB5783-M8x16-8.8	4	
9	272343511011	外门架焊合(2000)	Outer mast 2000	1	H=2000
9	272343511001	外门架焊合(2500)	Outer mast 2500	1	H=2500
9	272343511002	外门架焊合(2700)	Outer mast 2700	1	H=2700
9	272343511003	外门架焊合(3000)	Outer mast 3000	1	H=3000
9	272343511004	外门架焊合(3300)	Outer mast 3300	1	H=3300



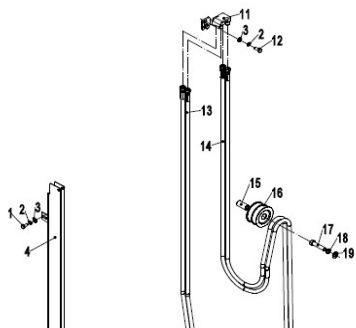
9	272343511005	外门架焊合(3500)	Outer mast 3500	1	H=3500
9	272343511006	外门架焊合(3700)	Outer mast 3700	1	H=3700
9	272343511007	外门架焊合(4000)	Outer mast 4000	1	H=4000
10	272344021080	耐磨套 Φ30xΦ38x25	Wear-resistant sleeve	2	
11	272344021008	门架固定销轴	Door frame fixed pin shaft	2	
12	910400100008	平垫圈GB97.1-12-200HV	The flat washer GB97.1-12-200 HV	4	
13	910400500008	弹簧垫圈GB93-12	Spring washer GB93-12	4	
14	910100300056	螺栓GB5783-M12x60-8.8	Bolt GB5783-M12x60-8.8	4	
15	272344021006	防护板	Shields	1	

起升管路(两级全自由门架)/LIFTING PIPEING(two-stage full free mast)

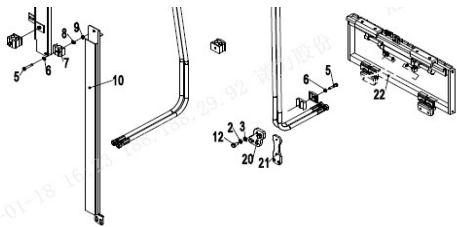


序号/NO	编码/SN	名称/Name	Name	数量/QTY	备注/Remark
1	271544029005	接头(直)10-M20x1.5-M18x1.5-60°	Joint (straight)10-M20x1.5-	1	
2	272344019002	液压钢管总成(左)	Hydraulic steel tube assembly (left)	1	
3	272344029002	液压管总成(90°)12-L500-2SC-60°	Hydraulic pipe assembly (90°)12-	1	
4	272344029001	液压管总成(直)10-L300-1SC-60°	Hydraulic pipe assembly	1	
5	272344019004	液压钢管总成(右)	Hydraulic steel tube assembly	1	
6	271598520002	防爆阀	Explosion-proof valve	1	
7	910100400009	螺栓GB5786-M12x1.25x25-8.8	Bolt GB5786-M12x1.25x25-8.8	1	
8	910400500008	弹簧垫圈GB93-12	Spring washer GB93-12	1	
9	910400100008	平垫圈GB97.1-12-200HV	The flat washer GB97.1-12-200 HV	1	
10	281244529001	接头(锁定弯)12-M18x1.5-M22x1.5-	Joint (lock) 12-M18x1.5-M22x1.5-	1	
11	271543529111	液压管总成(直)12-L300-1SC-60°	Hydraulic pipe assembly	1	H=2000
11	271543529111	液压管总成(直)12-L300-1SC-60°	Hydraulic pipe assembly	1	H=2500
11	271543529112	液压管总成(直)12-L400-1SC-60°	Hydraulic pipe assembly	1	H=2700
11	271543529113	液压管总成(直)12-L360-1SC-60°	Hydraulic pipe assembly	1	H=3000
11	271543529114	液压管总成(直)12-L500-1SC-60°	Hydraulic pipe assembly	1	H=3300
11	271543529113	液压管总成(直)12-L360-1SC-60°	Hydraulic pipe assembly	1	H=3500
11	271543529114	液压管总成(直)12-L500-1SC-60°	Hydraulic pipe assembly	1	H=3700
11	271543529113	液压管总成(直)12-L360-1SC-60°	Hydraulic pipe assembly	1	H=4000
12	271543529107	起升钢管焊合L=820	Lifting steel pipe welding L=820	1	H=2000
12	271543529101	起升钢管焊合L=960	Lifting steel pipe welding L=960	1	H=2500
12	271543529101	起升钢管焊合L=960	Lifting steel pipe welding L=960	1	H=2700
12	271543529102	起升钢管焊合L=1200	Lifting steel pipe welding L=1200	1	H=3000
12	271543529102	起升钢管焊合L=1200	Lifting steel pipe welding L=1200	1	H=3300
12	271543529103	起升钢管焊合L=1450	Lifting steel tube welding L=1450	1	H=3500
12	271543529103	起升钢管焊合L=1450	Lifting steel tube welding L=1450	1	H=3700
12	271543529104	起升钢管焊合L=1650	Lifting steel pipe welding L=1650	1	H=4000
13	910200200035	螺钉GB70.1-M6x16-8.8	Screw GB70.1 M6x16-8.8	1	
14	910400500005	弹簧垫圈GB93-6	Spring washer GB93-6	1	
15	951000100003	管夹YGE包胶15	Pipe clamp YGE wrap 15	1	
16	254144520040	接头(直)10-M22x1.5-M18x1.5-60°	Joint (straight)10-M22x1.5-	1	

侧移器及管路安装(两级全自由门架)/SIDE SHIFTER AND PIPING(two-stage full free mast)

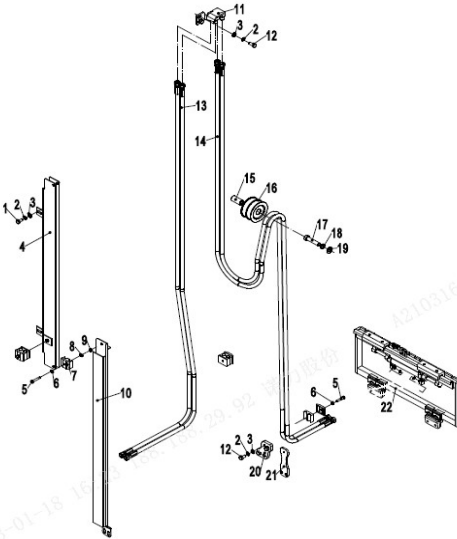


序号/NO	编码/SN	名称/Name	Name	数量/QTY	备注/Remark
1	910100300022	螺栓GB5783-M8x20-8.8	Bolt GB5783-M8x20-8.8	2	
2	910400500006	弹簧垫圈GB93-8	Spring washers GB93-8	8	
3	910400100006	平垫圈GB97.1-8-200HV	Plain washers GB97.1-8-200HV	8	
4	271529010101	外导槽焊合(四联)L=570	Outer guide groove welding L=570	2	H=2500
4	271529010102	外导槽焊合(四联)L=670	Outer guide groove welding L=670	2	H=2700
4	271529010103	外导槽焊合(四联)L=820	Outer guide groove welding L=820	2	H=3000
4	271529010104	外导槽焊合(四联)L=970	Outer guide groove welding L=970	2	H=3300
4	271529010105	外导槽焊合(四联)L=1070	Outer guide groove welding	2	H=3500
4	271529010106	外导槽焊合(四联)L=1170	Outer guide groove welding	2	H=3700
4	271529010107	外导槽焊合(四联)L=1370	Outer guide groove welding	2	H=4000
5	910100300014	螺栓GB5783-M6x35-8.8	Bolt GB5783-M6x35-8.8	2	
6	910400500005	弹簧垫圈GB93-6	Spring washers GB93-6	2	
7	271544021302	管夹体	Pipe clamp	4	
8	910400100005	平垫圈GB97.1-6-200HV	Plain washers GB97.1-6-200HV	2	
9	910300100005	螺母GB6170-M6-10	Nut GB6170-M6-10	2	
10	271529010111	内导槽焊合(四联)L=495	Inner guide groove welding L=495	1	H=2500
10	271529010112	内导槽焊合(四联)L=595	Inner guide groove welding L=595	1	H=2700



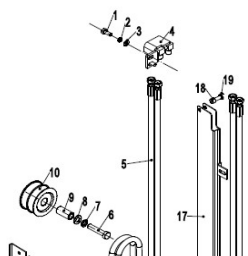
10	271529010113	内导槽焊合(四联)L=745	Inner guide groove welding L=745	1	H=3000
10	271529010114	内导槽焊合(四联)L=895	Inner guide groove welding L=895	1	H=3300
10	271529010115	内导槽焊合(四联)L=995	Inner guide groove welding L=995	1	H=3500
10	271529010116	内导槽焊合(四联)L=1095	Inner guide groove welding L=1095	1	H=3700
10	271529010117	内导槽焊合(四联)L=1245	Inner guide groove welding L=1245	1	H=4000
11	271529011001	四通阀总成(四联)	Four-way valve assembly	1	
12	910100300022	螺栓GB5783-M8x20-8.8	Bolt GB5783-M8x20-8.8	2	
13	271528520155	液压管总成(直)8-L2400-1SC-60°	Hydraulic pipe assembly (straight)8	2	H=2500
13	271528520156	液压管总成(直)8-L2500-1SC-60°	Hydraulic pipe assembly (straight)8	2	H=2700
13	271528520157	液压管总成(直)8-L2620-1SC-60°	Hydraulic pipe assembly (straight)8	2	H=3000
13	271528520158	液压管总成(直)8-L2800-1SC-60°	Hydraulic pipe assembly (straight)8	2	H=3300
13	271528520159	液压管总成(直)8-L2900-1SC-60°	Hydraulic pipe assembly (straight)8	2	H=3500
13	271529020166	液压管总成(直)8-L3000-1SC-60°	Hydraulic pipe assembly (straight)8	2	H=3700
13	271528520160	液压管总成(直)8-L3150-1SC-60°	Hydraulic pipe assembly (straight)8	2	H=4000
14	271528520161	液压管总成(直)8-L2010-1SC-60°	Hydraulic pipe assembly (straight)8	2	H=2500

侧移器及管路安装(两级全自由门架)/SIDE SHIFTER AND PIPING(two-stage full free mast)

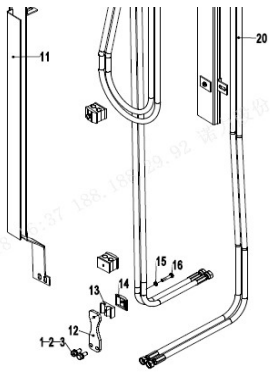


序号/NO	编码/SN	名称/Name	Name	数量/QTY	备注/Remark
14	271528520170	液压管总成(直)8-L2310-1SC-60°	Hydraulic pipe assembly (straight)8	2	H=2700
14	271528520162	液压管总成(直)8-L2610-1SC-60°	Hydraulic pipe assembly (straight)8	2	H=3000
14	271528520163	液压管总成(直)8-L2910-1SC-60°	Hydraulic pipe assembly (straight)8	2	H=3300
14	271528520164	液压管总成(直)8-L3210-1SC-60°	Hydraulic pipe assembly (straight)8	2	H=3500
14	271528520165	液压管总成(直)8-L3410-1SC-60°	Hydraulic pipe assembly (straight)8	2	H=3700
14	271528520166	液压管总成(直)8-L3710-1SC-60°	Hydraulic pipe assembly (straight)8	2	H=4000
15	271527521004	衬套Φ20xΦ13x41.5	Shaft sleeve Φ20 Φ13 x41.5	1	
16	271527521003	滑轮Φ74x46(双槽)	Pulley Φ74 x46 (dual slot)	1	
17	910100300055	螺栓GB5783-M12x55-8.8	Bolt GB5783-M12x55-8.8	1	
18	910400500008	弹簧垫圈GB93-12	Spring washers GB93-12	1	
19	910400100008	平垫圈GB97.1-12-200HV	Plain washers GB97.1-12-200HV	1	
20	272328520002	固定板	Fixing plate	1	
21	271530520103	安装板	Mounting plate	1	
22	272042510001	侧移器总成	Side shifter assembly (linkage)	1	

双附加管路(两级全自由门架)/SIDE SHIFTER AND PIPING(two-stage full free mast)

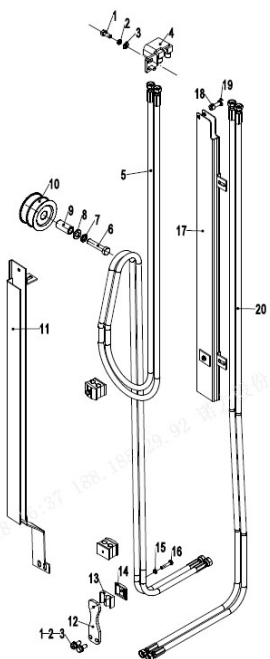


序号/NO	编码/SN	名称/Name	Name	数量/QTY	备注/Remark
1	910100300022	螺栓GB5783-M8x20-8.8	Bolt GB5783-M8x20-8.8	4	
2	910400500006	弹簧垫圈GB93-8	Spring washers GB93-8	4	
3	910400100006	平垫圈GB97.1-8-200HV	Plain washers GB97.1-8-200HV	4	
4	271528511001	四通阀总成(三联)	Four-way valve assembly	1	
5	271528520161	液压管总成(直)8-L2010-1SC-60°	Hydraulic pipe assembly (straight)8	2	H=2500
5	271528520170	液压管总成(直)8-L2310-1SC-60°	Hydraulic pipe assembly (straight)8	2	H=2700
5	271528520162	液压管总成(直)8-L2610-1SC-60°	Hydraulic pipe assembly (straight)8	2	H=3000
5	271528520163	液压管总成(直)8-L2910-1SC-60°	Hydraulic pipe assembly (straight)8	2	H=3300
5	271528520164	液压管总成(直)8-L3210-1SC-60°	Hydraulic pipe assembly (straight)8	2	H=3500
5	271528520165	液压管总成(直)8-L3410-1SC-60°	Hydraulic pipe assembly (straight)8	2	H=3700
5	271528520166	液压管总成(直)8-L3710-1SC-60°	Hydraulic pipe assembly (straight)8	2	H=4000
6	910100300055	螺栓GB5783-M12x55-8.8	Bolt GB5783-M12x55-8.8	1	
7	910400500008	弹簧垫圈GB93-12	Spring washers GB93-12	1	



8	91040010008	手垫圈GB97.1-12-200HV	Plain washers GB97.1-12-200HV	1	
9	271527521004	衬套 Φ20xΦ13x41.5	Shaft sleeve Φ 20 Φ x13 x41.5	1	
10	271527521003	滑轮 Φ74x46 (双槽)	Pulley φ74x46(double groove)	1	
11	272329010111	内导槽焊合(三联)L=495	Inner guide groove welding L=495	1	H=2500
11	272329010112	内导槽焊合(三联)L=595	Inner guide groove welding L=595	1	H=2700
11	272329010113	内导槽焊合(三联)L=745	Inner guide groove welding L=745	1	H=3000
11	272329010114	内导槽焊合(三联)L=895	Inner guide groove welding L=895	1	H=3300
11	272329010115	内导槽焊合(三联)L=995	Inner guide groove welding L=995	1	H=3500
11	272329010116	内导槽焊合(三联)L=1095	Inner guide groove welding L=1095	1	H=3700
11	272329010117	内导槽焊合(三联)L=1245	Inner guide groove welding L=1245	1	H=4000
12	271530520103	安装板	Mounting plate	1	
13	271544021302	管夹体	Double pipe clamp	3	
14	271544021303	盖板	Cover Plate	3	
15	910400500005	弹簧垫圈GB93-6	Spring washers GB93-6	3	
16	910100300013	螺栓GB5783-M6x30-8.8	Bolt GB5783-M6x30-8.8	3	
17	271528510101	外导槽焊合L=570	Outer guide groove welding L=570	1	H=2500
17	271528510102	外导槽焊合L=670	Outer guide groove welding L=670	1	H=2700
17	271528510103	外导槽焊合L=820	Outer guide groove welding L=820	1	H=3000
17	271528510104	外导槽焊合L=970	Outer guide groove welding L=970	1	H=3300

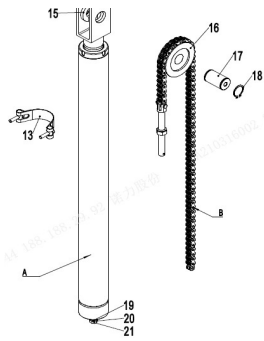
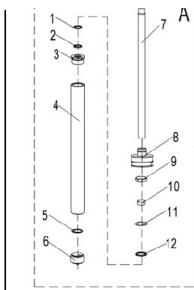
双附加管路 (两级全自由门架)/SIDE SHIFTER AND PIPING(two-stage full free mast)



序号/NO	编码/SN	名称/Name	Name	数量/QTY	备注/Remark
17	271528510105	外导槽焊合L=1070	Outer guide groove welding L=1070	1	H=3500
17	271528510106	外导槽焊合L=1170	Outer guide groove welding L=1170	1	H=3700
17	271528510107	外导槽焊合L=1370	Outer guide groove welding L=1370	1	H=4000
18	910200200059	螺钉GB70.1-M8x30-8.8	Screws GB70.1-M8x30-8.8	1	
19	910300100006	螺母GB6170-M8-10	Nuts GB6170-M8-10	1	
20	271528520151	液压管总成(直)8-L1900-1SC-60°	Hydraulic pipe assembly (straight)8	2	H=2500
20	271528520152	液压管总成(直)8-L2000-1SC-60°	Hydraulic pipe assembly (straight)8	2	H=2700
20	271528520153	液压管总成(直)8-L2130-1SC-60°	Hydraulic pipe assembly (straight)8	2	H=3000
20	271528520154	液压管总成(直)8-L2300-1SC-60°	Hydraulic pipe assembly (straight)8	2	H=3300
20	271528520155	液压管总成(直)8-L2400-1SC-60°	Hydraulic pipe assembly (straight)8	2	H=3500
20	271528520156	液压管总成(直)8-L2500-1SC-60°	Hydraulic pipe assembly (straight)8	2	H=3700
20	271528520157	液压管总成(直)8-L2620-1SC-60°	Hydraulic pipe assembly (straight)8	2	H=4000

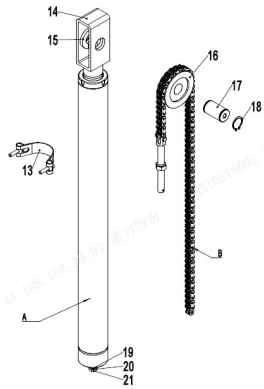
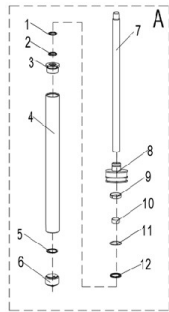
短升降油缸 (二级全自由)/Short lift cylinder (two-stage full free mast)

序号/NO	编码/SN	名称/Name	Name	数量/QTY	备注/Remark
A	271543518001	油缸(M)(H=2500)	Oil cylinder (M) Φ76 xΦ63 x497	1	H=2500
	271543518002	油缸(M)(H=2700)	Oil cylinder (M) Φ 76 xΦ63x597	1	H=2700
	271543518003	油缸(M)(H=3000)	Oil cylinder (M) Φ 76 xΦ63 x747	1	H=3000
	271543518004	油缸(M)(H=3300)	Oil cylinder (M) Φ 76 xΦ63 x897	1	H=3300
	271543518005	油缸(M)(H=3500)	Oil cylinder (M)Φ 76 xΦ63 x997	1	H=3500
	271543518006	油缸(M)(H=3700)	Oil cylinder (M) Φ 76 xΦ63 x1097	1	H=3700
	271543518007	油缸(M)(H=4000)	Oil cylinder (M) Φ 76 xΦ63 x1247	1	H=4000
	271543515002	起升链条LH1044-75	Lifting chain LH1044-75	2	H=2000
	272343515001	起升链条LH1044-73	Lifting chain LH1044-73	2	H=2500



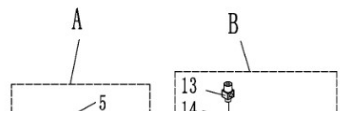
B	271544515001	起升链条LH1044-77	Lifting chain LH1044-77	2	H=2700
	271544515002	起升链条LH1044-81	Lifting chain LH1044-81	2	H=3000
	272344515002	起升链条LH1044-85	Lifting chain LH1044-85	2	H=3300
	271544515005	起升链条LH1044-89	Lifting chain LH1044-89	2	H=3500
	271544515006	起升链条LH1044-93	Lifting chain LH1044-93	2	H=3700
	272343515002	起升链条LH1044-97	Lifting chain LH1044-97	2	H=4000
C	271598510002	密封件修理包(中间缸)	Seal repair kit (middle cylinder)	1	包含/Inc1.2.9.11.1
1	▲	防尘圈	Shaft with 40 x 50 x 6_11	1	
2	▲	密封圈	DH40 x 48 x 5 x 6.5	1	
3	▲	内置缸盖	Built-in cylinder head	1	
4	▲	内置缸筒	Built-in cylinder	1	
5	▲	挡片53X63X3	53 x63x3 block slice	1	
6	▲	右缸底	The bottom right	1	
7	▲	活塞杆	The piston rod	1	
8	▲	活塞	The piston	1	
9	▲	支承环58X63X13	Bearing ring 58 x63x13	1	
10	▲	钢背轴承40X44X20	Steel back bearing 40X44X20	1	
11	▲	o型圈	O-rings D68X3. 1	1	
12	▲	孔用密封圈	Hole with 53 * 63 * 6_11	1	
13	940800600004	抱箍组件Φ80	Holding hoop assembly Φ80	1	
14	271544520003	链轮架	Sprocket Rack	1	
15	271544520002	链轮垫圈	Sprocket washers	5	
16	940200500014	链轮轴承780307-Φ90XΦ35X21	Sprocket bearings 780307-	1	

短升降油缸 (二级全自由) /Short lift cylinder (two-stage full free mast)

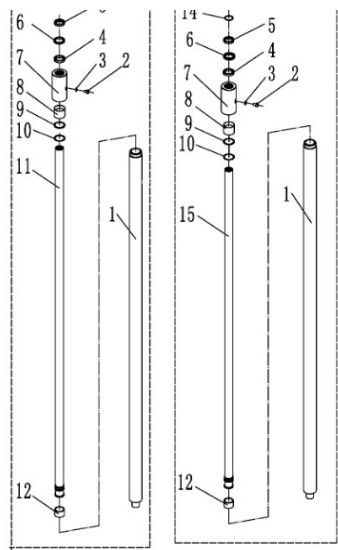


序号/NO	编码/SN	名称/Name	Name	数量/QTY	备注/Remark
17	271544520001	链轮销轴	Sprocket pin shaft	1	
18	910401300018	轴用弹性挡圈GB894.1-35	Shaft with elastic retaining ring	2	
19	910400100008	平垫圈GB97.1-12-200HV	Plain washers GB97.1-12-200HV	1	
20	910400500008	弹簧垫圈GB93-12	Spring washers GB93-12	1	
21	910100400009	螺栓GB5786-M12x1.25x25-8.8	Bolt GB5786-M12x1.25x25-8.8	1	

起升油缸 (二级全自由) /Lift cylinder (two-stage full free mast)

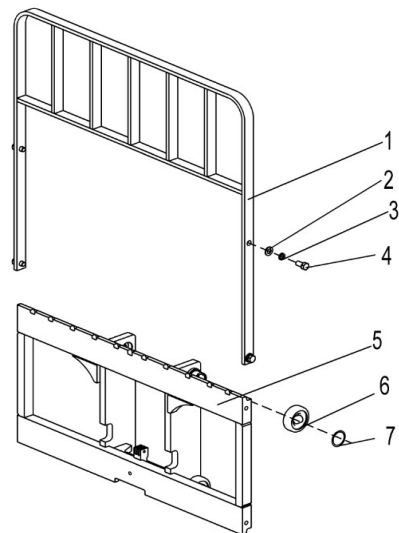


序号/NO	编码/SN	名称/Name	Name	数量/QTY	备注/Remark
A	271543516001	Oil cylinder (R) Φ 40 xΦ30 x1245	油缸(R)(H=2500)	1	H=2500
	271543516002	Oil cylinder (R) Φ 40 xΦ30 x1345	油缸(R)(H=2700)	1	H=2700
	271543516003	Oil cylinder (R) Φ 40 xΦ30 x1495	油缸(R)(H=3000)	1	H=3000
	271543516004	Oil cylinder (R) Φ 40 xΦ30 x1645	油缸(R)(H=3300)	1	H=3300
	271543516005	Oil cylinder (R) Φ 40 xΦ30 x1745	油缸(R)(H=3500)	1	H=3500



	271543516006	Oil cylinder (R) Φ 40 x Φ 30 x1845	油缸(R)(H=3700)	1	H=3700
	271543516007	Oil cylinder (R) Φ 40 x Φ 30 x1995	油缸(R)(H=4000)	1	H=4000
	271543517001	Oil cylinder (L) Φ 40 x Φ 30 x1245	油缸(L)(H=2500)	1	H=2500
	271543517002	Oil cylinder (L) Φ 40 x Φ 30 x1345	油缸(L)(H=2700)	1	H=2700
	271543517003	Oil cylinder (L) Φ 40 x Φ 30 x1495	油缸(L)(H=3000)	1	H=3000
	271543517004	Oil cylinder (L) Φ 40 x Φ 30 x1645	油缸(L)(H=3300)	1	H=3300
	271543517005	Oil cylinder (L) Φ 40 x Φ 30 x1745	油缸(L)(H=3500)	1	H=3500
	271543517006	Oil cylinder (L) Φ 40 x Φ 30 x1845	油缸(L)(H=3700)	1	H=3700
	271543517007	Oil cylinder (L) Φ 40 x Φ 30 x1995	油缸(L)(H=4000)	1	H=4000
1	▲	Cylinder block	缸体	2	
2	▲	Hexagon socket head screw	内六角圆柱头螺钉	2	
3	▲	Combination gasket	组合密封垫圈	2	
4	▲	Shaft seal 30 x40x6	轴封30X40X6	2	
5	▲	DH30X38X5	DH30X38X5	2	
6	▲	Retaining ring	挡圈	2	
7	▲	Cylinder head	缸盖	2	
8	▲	Steel back bearing 30X34X25	钢背轴承30X34X25	2	
9	▲	O-rings D45X3. 1	O型圈	2	
10	▲	Retaining ring	挡圈	2	
11	▲	Right the piston rod	右活塞杆	1	
12	▲	Supporting ring for bore 35X40X10	孔用支承环35X40X10	2	
13	▲	The left cylinder joint	左缸接头	1	
14	▲	O-ring rubber	O形橡胶密封圈	1	
15	▲	Left the piston rod	左活塞杆	1	
16	▲	Steel body	钢体	1	
A	271598510003	Seal repair kit (lifting cylinder)	密封件修理包(起升缸)	2	包内含: 2, 3, 5, 9, 12, 14

货叉架 (三级全自由门架)/FORK ARM CARRIER(three-stage full free mast)

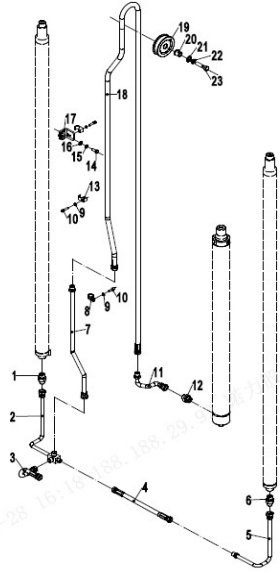


序号/NO	编码/SN	名称/Name	Name	数量/QTY	备注/Remark
1	271540511001	货架架焊合 (825x878)	Shelf welding (825x878)	1	
2	910100300050	螺栓GB5783-M12x30-8.8	Bolt GB5783 M12x30-8.8	4	
3	910400500008	弹簧垫圈GB93-12	Spring washer GB93-12	4	
4	910400100008	平垫圈GB97. 1-12-200HV	The flat washer GB97.1-12-200 HV	4	
5	271538013001	货叉架焊合(三级全自由门架)	Fork rack (three-stage full free)	1	
6	940200300003	复合滚轮 Φ 70. 6-range=43. 5-47. 5	Composite roller Φ 70.6-	4	
7	910401300018	轴用弹性挡圈GB894. 1-35	Axis with elastic catch GB894.1-35	4	

门架 (三级全自由门架)/MAST(three-stage full free mast)

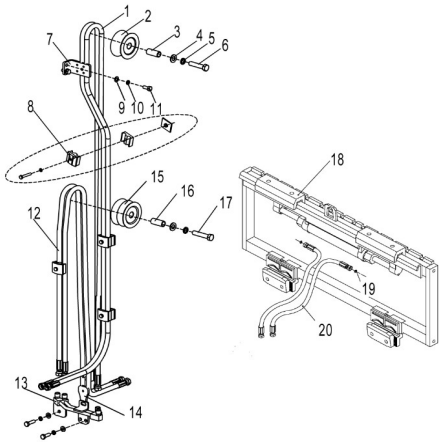
序号/NO	编码/SN	名称/Name	Name	数量/QTY	备注/Remark
1	910100300009	螺栓GB5783-M6x12-8. 8	Bolt GB5783-M6x12-8.8	2	

起升管路 (三级全自由门架) / LIFTING PIPEING(three-stage full free mast)



序号/NO	编码/SN	名称/Name	Name	数量/QTY	备注/Remark
1	271544029005	接头(直)10-M20x1.5-M18x1.5-60°	Joint (straight)10-M20x1.5-	1	
2	272344519001	液压钢管总成(左)	Hydraulic steel tube assembly (left)	1	
3	272344029002	液压管总成(90°)12-L500-2SC-60°	Hydraulic tube assembly (90°)12-	1	
4	272344529002	液压管总成(直)10-L285-1SC-60°	Hydraulic tube assembly 10-L285-	1	
5	272344519003	液压钢管总成(右)	Hydraulic steel tube assembly	1	
6	271598520002	防爆阀	Explosion-proof valve	1	
7	272344519002	钢管总成(主)	Hydraulic steel tube assembly	1	
8	951000100003	管夹YGE包胶15	Hose Clamp	1	
9	910400500005	弹簧垫圈GB93-6	Spring Washer GB93-6	4	
10	910200200036	螺钉GB70.1-M6x20-8.8	Screw GB70.1-M6x20-8.8	4	
11	272344519002	钢管总成(主)	Steel tube assembly (Main)	1	
12	254144520040	接头(直)10-M22x1.5-M18x1.5-60°	Joint (straight)10-M22x1.5-	1	
13	255044520132	油管夹	Tubing clamp	3	
14	910100300022	螺栓GB5783-M8x20-8.8	Bolt GB5783-M8x20-8.8	2	
15	910400500006	弹簧垫圈GB93-8	Spring Washer GB93-8	2	
16	910100500006	螺栓GB31.1-M20x90-8.8	Bolt GB31.1-M20x90-8.8	2	
17	271544529005	安装板(主)	Mounting plate (main)	1	
18	272344519102	液压管总成(直)12-L2870-2SC-60°	Hydraulic tube assembly 12-L2870-	1	H=4000
18	281244519103	液压管总成(直)12-L3080-2SC-60°	Hydraulic tube assembly 12-L3080-	1	H=4350
18	254144520042	液压管总成(直)12-L3150-2SC-60°	Hydraulic tube assembly 12-L3150-	1	H=4500
18	271544529107	液压管总成(直)12-L3360-2SC-60°	Hydraulic tube assembly 12-L3360-	1	H=4800
18	272344519103	液压管总成(直)12-L3570-2SC-60°	Hydraulic tube assembly 12-L3570-	1	H=5000
19	271544529004	滑轮Φ84x18(单槽)	Pulley Φ84x18(single)	1	
20	255036020007	衬套Φ20xΦ13x19	Bush Φ20xΦ13x19	1	
21	910400100008	平垫圈GB97.1-12-200HV	Washer GB97.1-12-200HV	1	
22	910400500008	弹簧垫圈GB93-12	Spring washer GB93-12	1	
23	910100300052	螺栓GB5783-M12x40-8.8	Bolt GB5783-M12x40-8.8	1	

侧移器及管路安装 (三级全自由门架) / Side shifter and pipeline installation(three-stage full free mast)



序号/NO	编码/SN	名称/Name	Name	数量/QTY	备注/Remark
1	272327520002	液压管总成(直)8-L3800-1SC-60°	Hydraulic tube assembly (straight) 8 - L3800-1	2	H=4000
	271529020155	液压管总成(直)8-L3910-1SC-60°	Hydraulic tube assembly (straight) 8 - L3910-1	2	H=4350
	271527520004	液压管总成(直)8-L4000-1SC-60°	Hydraulic tube assembly (straight) 8 - L4000-1	2	H=4500
	271527520005	液压管总成(直)8-L4200-1SC-60°	Hydraulic tube assembly (straight) 8 - L4200-1	2	H=4800
	271527520006	液压管总成(直)8-L4400-1SC-60°	Hydraulic tube assembly (straight) 8 - L4400-1	2	H=5000
2	271530520104	滑轮Φ54x38(单槽)	Pulley Φ x38 54 (single slot)	1	
3	271530520105	衬套Φ20xΦ13x33	Bushing Φ Φ x33 13 x 20	1	
4	910400100008	平垫圈GB97.1-12-200HV	The flat washer GB97.1-12-200 HV	2	
5	910400500008	弹簧垫圈GB93-12	Spring washer GB93-12	1	
6	910100300055	螺栓GB5783-M12x55-8.8	Bolt GB5783 M12x55-8.8	1	
7	271530520102	胶管固定板	Hose clamp	1	
8	271544001101	双孔管夹	Double pipe clamp	5	
9	910400100006	平垫圈GB97.1-8-200HV	The flat washer GB97.1-8-200 HV	7	
10	910400500006	弹簧垫圈GB93-8	Spring washer GB93-8	7	
11	910100300023	螺栓GB5783-M8x25-8.8	Bolt GB5783 M8x25-8.8	7	
12	271530520151	液压管总成(直)8-L1990-1SC-60°	Hydraulic tube assembly (straight) 8-L1990-	2	H=4000
	271530520152	液压管总成(直)8-L2050-1SC-60°	Hydraulic tube assembly (straight) 8-L2050-	2	H=4350
	271530520153	液压管总成(直)8-L2140-1SC-60°	Hydraulic tube assembly (straight) 8-L2140-	2	H=4500
	271530520154	液压管总成(直)8-L2240-1SC-60°	Hydraulic tube assembly (straight) 8-L2240-	2	H=4800
	271530520155	液压管总成(直)8-L2340-1SC-60°	Hydraulic tube assembly (straight) 8-L2340-	2	H=5000
13	271530511001	液压钢管总成(三联)	Hydraulic steel tube assembly	1	
14	271530520103	安装板	Mounting plate	1	
15	271527521003	滑轮Φ74x46(双槽)	Pulley Φ x46 74 (dual slot)	3	
16	271530520106	衬套Φ20xΦ13x41	Bushing Φ Φ x41 13 x 20	1	
17	910100300056	螺栓GB5783-M12x60-8.8	Bolt GB5783 M12x60-8.8	1	
18	272042510001	侧移器总成(联动)	Side shifter assembly (linkage)	1	
19	910800100001	O形圈-内9.5x1.8	O-ring - internal 9.5x1.8	2	

双附加管路 (三级全自由门架)/SIDE SHIFTER AND PIPING(three-stage full free mast)

序号/NO	编码/SN	名称/Name	Name	数量/QTY	备注/Remark
1	910100100056	螺栓GB5782-M12x90-8.8	Bolt GB5782-M12x90-8.8	1	
2	910400500008	弹簧垫圈GB93-12	Spring Washer GB93-12	2	
3	910400100008	平垫圈GB97.1-12-200HV	Flat Washer GB97.1-12-200HV	2	
4	254130520016	衬套Φ20xΦ13x43	Bushing Φ20xΦ13x43	1	
5	271527521003	滑轮Φ74x46(双槽)	Pulley Φ74x46	2	
6	910200200038	螺钉GB70.1-M6x25-8.8	Screw GB70.1-M6x25-8.8	4	
7	910400500005	弹簧垫圈GB93-6	Spring Washer GB93-6	4	
8	271531020103	压板(三孔)	Pressure Plate (three holes)	4	
9	271530520102	胶管固定板	Hose fixing plate	2	
10	910400100006	平垫圈GB97.1-8-200HV	Flat Washer GB97.1-8-200HV	8	
11	910400500006	弹簧垫圈GB93-8	Spring Washer GB93-8	10	
12	910100300022	螺栓GB5783-M8x20-8.8	Bolt GB5783-M8x20-8.8	4	
13	271531020111	液压管总成(直)8-L4300-1SC-60°	Hydraulic tube assembly (straight)	2	H=4000
13	271531020112	液压管总成(直)8-L4500-1SC-60°	Hydraulic tube assembly (straight)	2	H=4350
13	272327520003	液压管总成(直)8-L4600-1SC-60°	Hydraulic tube assembly (straight)	2	H=4500
13	271531020114	液压管总成(直)8-L4800-1SC-60°	Hydraulic tube assembly (straight)	2	H=4800
13	271527520008	液压管总成(直)8-L5000-1SC-60°	Hydraulic tube assembly (straight)	2	H=5000
14	271531011001	钢管总成(四联)	Steel tube assembly (quadruple)	1	
15	271530520103	安装板	Mounting plate	2	
16	271544021302	管夹体	Pipe clamp	4	
17	271544021303	盖板	Cover Plate	4	
18	910400500005	弹簧垫圈GB93-6	Spring Washer GB93-6	4	
19	910100300014	螺栓GB5783-M6x35-8.8	Bolt GB5783-M6x35-8.8	4	
20	271530520151	液压管总成(直)8-L2050-1SC-60°	Hydraulic tube assembly (straight)	2	H=4000
20	271530520152	液压管总成(直)8-L2140-1SC-60°	Hydraulic tube assembly (straight)	2	H=4350
20	271530520153	液压管总成(直)8-L2240-1SC-60°	Hydraulic tube assembly (straight)	2	H=4500
20	271530520154	液压管总成(直)8-L2340-1SC-60°	Hydraulic tube assembly (straight)	2	H=4800
20	271530520155	液压管总成(直)8-L2520-1SC-60°	Hydraulic tube assembly (straight)	2	H=5000
21	910100300056	螺栓GB5783-M12x60-8.8	Bolt GB5783-M12x60-8.8	1	

短升降油缸 (三级全自由)/Short lift cylinder (three-stage full free mast)

序号/NO	编码/SN	名称/Name	Name	数量/QTY	备注/Remark
A	271544518001	油缸(M)(H=4000)	Oil cylinder (M) Φ 56 xΦ45 x497	1	H=4000
	271544518002	油缸(M)(H=4350)	Oil cylinder (M) Φ 56 xΦ45 x597	1	H=4350
	271544518003	油缸(M)(H=4500)	Oil cylinder (M) Φ 56 xΦ45x 747	1	H=4500
	271544518004	油缸(M)(H=4500)	Oil cylinder (M) Φ 56 xΦ45 x897	1	H=4800
	271544518005	油缸(M)(H=5000)	Oil cylinder (M) Φ 56 xΦ45 x997	1	H=5000
B	272344515001	起升链条LH1044-79	Lifting chain LH1044-79	1	H=4000
	▲	起升链条LH1044-81	Lifting chain LH1044-81	1	H=4350
	272344515002	起升链条LH1044-85	Lifting chain LH1044-85	1	H=4500
	272344515006	起升链条LH1044-87	Lifting chain LH1044-87	1	H=4800
	272344515004	起升链条LH1044-95	Lifting chain LH1044-95	1	H=5000
C	271598510002	密封件修理包(中间缸)	Seal repair kit (middle cylinder)	1	包含/Inc1.2.9.11.1
1	▲	防尘圈	Shaft with 40 x 50 x 6 _11	1	
2	▲	密封圈	DH40 x 48 x 5 x 6.5	1	
3	▲	内置缸盖	Built-in cylinder head	1	
4	▲	内置缸筒	Built-in cylinder	1	
5	▲	挡片53X63X3	53 x63x3 block slice	1	
6	▲	右缸底	The bottom right	1	
7	▲	活塞杆	The piston rod	1	
8	▲	活塞	The piston	1	
9	▲	支承环58X63X13	Bearing ring 58 x63x13	1	
10	▲	钢背轴承40X44X20	Steel back bearing 40X44X20	1	
11	▲	O型圈	O-rings D68X3. 1	1	
12	▲	孔用密封圈	Hole with 53 * 63 * 6 _11	1	
13	940800600004	抱箍组件Φ80	Holding hoop assembly Φ80	1	
14	271544520003	链轮架	Sprocket Rack	1	
15	271544520002	链轮垫圈	Sprocket washers	5	
16	940200500014	链轮轴承780307-Φ90XΦ35X21	Sprocket bearings 780307-	1	

