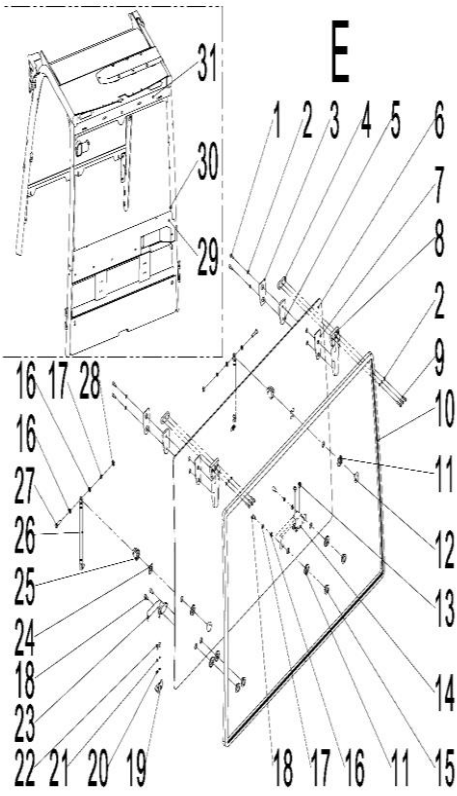


后窗安装/Rear window installation



序号/NO	编码/SN	Name	名称	数量/QTY	备注/Remarks
E	257022511103	Screw GB70.1-M6x20-8.8	后窗装配总成	1	包含 1-28
1	910200200036	Screw GB70.1-M6x20-8.8	螺钉 GB70.1-M6x20-8.8	4	
2	910400500005	Spring washer GB93-6	弹簧垫圈 GB93-6	10	
3	255022511010	Pallets	垫板	2	
4	255022521018	Silk base plate (rear window)	丝座板(后窗)	2	
5	255022520201	platen	压板	2	
6	257022520104	rear window	后窗玻璃	1	
7	255022521087	Hinged rubber pads	铰链橡胶垫	2	
8	255022511016	Hinge assembly	铰链总成	2	
9	910200200038	Screw GB70.1-M6x25-8.8	螺钉 GB70.1-M6x25-8.8	6	
10	257022520110	Rear window seals	后窗密封条	1	
11	255022520105	Rubber mats	橡胶垫	6	
12	255022521092	Fixed rods	固定杆	2	
13	941100100001	Screws M8x12-8.8	螺钉 M8x12-8.8	2	
14	255022511060	Rear handle assembly	后把手总成	1	
15	255022520104	Fixed wire seat	固定丝座	4	
16	910400100006	Flat washer GB97.1-8-200HV	平垫圈 GB97.1-8-200HV	6	
17	910400500006	Spring washer GB93-8	弹簧垫圈 GB93-8	4	
18	910200200055	Screw GB70.1-M8x16-8.8	螺钉 GB70.1-M8x16-8.8	4	
19	257022521099	Rear window limit plate (right)	后窗限位板(右)	1	
20	910400100004	Flat washer GB97.1-5-200HV	平垫圈 GB97.1-5-200HV	2	
21	910400500004	Spring washer GB93-5	弹簧垫圈 GB93-5	2	
22	910200200022	Screws GB70.1-M5x12-8.8	螺钉 GB70.1-M5x12-8.8	2	
23	255022520109	The handle	手柄	1	
24	255022521084	Bearing rubber pad	支座橡胶垫	2	
25	255022521083	Air spring fork	气弹簧卜叉	2	
26	255022511008	Gas Spring 50N(D375)	气弹簧 50N (D375)	2	
27	910100100021	Bolt GB5782-M8x35-8.8	螺栓 GB5782-M8x35-8.8	2	
28	910300100006	Nut GB6170-M8-10	螺母 GB6170-M8-10	2	
29	257022021201	Mounting plate 2	安装板 2	1	护顶架上焊接配件
30	255022521021	Support (air spring)	支座(气弹簧)	2	

